

# Feedback

## Canadian Aviation Service Difficulty Reports

The following content was published between January 1, 2018 and March 31, 2018.

### Table of Contents

Head's Up .....	2
Bombardier, CL-600-2D15 (705) .....	2
Equipment Airworthiness Directive on Crew O2 Mask.....	2
Fixed Wing.....	3
Boeing, 757-2B7.....	3
Leaking Elevator Pressure Reducer By-pass Valve .....	3
Bombardier, CL-600-2C10.....	4
Auxiliary Power Unit Mounting Strut Cracked.....	4
Bombardier, CL-600-2D24 (RJ900).....	5
Rudder System - Power Control Unit Rod End Broken.....	5
de Havilland – Canada, DHC-8-400 .....	6
Broken Aileron Cable .....	6
Engine .....	8
Austro Engine, E4-A.....	8
Engine Failure Due To Foreign Object Debris.....	8
AVCO Lycoming, IO-540-K1B5 .....	9
Connecting Rod Bushing Failure.....	9
Pratt & Whitney – USA, JT8D-17.....	10
Engine Shutdown Due to Oil Loss from Loose Fitting .....	10
Pratt & Whitney – Canada, PT6A-114A.....	10
Missing or Forgotten Bracket Causes Engine Shutdown.....	10
Teledyne Continental, IO-240-B .....	11
Corroded Weld on Oil Sump Causing Leak.....	11
Rotorcraft.....	12
Bell Textron - Canada, 206B .....	12
Cracked Tension Torsion Strap Urethane Coating.....	12
Equipment Airworthiness Directives (ADs).....	13
FAA Special Airworthiness Information Bulletins (SAIB).....	14
EASA Safety Information Bulletin (SIB).....	15
Service Difficulty Reports (SDR) .....	16

# **Head's Up**

## **Bombardier, CL-600-2D15 (705)**

### **Equipment Airworthiness Directive on Crew O2 Mask**

SDR #: 20161020005

#### ***Subject:***

The oxygen mask was received for servicing and the defect noted was "observer mask has a hole in it". Upon inspection and teardown, it was found that the harness assembly was 12 years old and blown. The manufacturer recommends to replace the inflatable harness assembly every 6 years. Upon further inspection, a number of other discrepancies and evidence of improper/substandard maintenance were noted.

The main concern/problem is a blown inflatable harness with over 12 years of service indicates a lack of proper inspection and recommended maintenance. There were no inspection letter markings found on the harness indicating that Zodiac service bulletin (SB) MXH-35-241 was carried out. This SB was required by EASA airworthiness directive (AD) 2011-0090R1 and dates back to June 23, 2011 with accomplishment instructions within 24 months.

The mask assembly was manufactured in November 2001, and the combined diaphragm was dated 2004 which indicates no proper maintenance or overhaul had been done since new. It was also noted that the main casing which was dated October 2009 was replaced during a repair accomplished in 2010, however the combined diaphragm dated 2004 was put back into the regulator.

Service information letter (SIL) 18 recommends replacement of the harness every 6 years, and overhaul every 6 years.

#### ***Transport Canada Comments:***

The submitter raises some good points and references the recommended intervals recommend by the manufacturer and the SIL. The question about the operator's compliance with the EASA equipment AD 2011-0090R1 is certainly a concern. This equipment AD is effective in Canada and is in the Continuing Airworthiness Information System (CAWIS) database.

The manufacturer's and the SIL recommendations are not necessarily a mandatory overhaul requirement. These items are manufacturer's recommendations and used to make and amend an operator's maintenance schedule approval (MSA). The MSA requirements and intervals may be the same or different depending on the actual Transport Canada MSA approval for the operator.

Without knowing the history of this line replaceable component and the installation and removal data, it is difficult to assess the missed AD compliance issue. Operators must be diligent in monitoring all applicable equipment ADs to remain in compliance with Canadian Aviation Regulation (CAR) 605.84 requirements, because they can come from many civil aviation authorities.

Transport Canada is publishing this article to raise awareness in regards to equipment maintenance and equipment ADs.

# **Fixed Wing**

## **Boeing, 757-2B7**

### **Leaking Elevator Pressure Reducer By-pass Valve**

SDR #: 20170518018

#### ***Subject:***

During a service check, the maintenance staff found a hydraulic fluid puddle beneath the tail of the aircraft. Further investigation of the leak revealed that when hydraulic system pressure was applied, a notable increase of hydraulic fluid flow was observed. The elevator pressure reducer/by-pass valve was found to be the source of the leak and was removed and replaced. After removal and upon closer inspection, the valve case was found cracked.

#### ***Transport Canada Comments:***

The maintenance staff investigated something that appeared out of the ordinary, possibly preventing an in-flight failure. By finding this defect on the ground, observant maintenance staff may have prevented a failure that would have adversely affected the elevator control system and the associated hydraulic system. The leaking valve could have caused a large loss of hydraulic fluid, possibly necessitating crew emergency actions.

Alert maintenance personnel exercising awareness during maintenance activities and looking beyond the immediate task can find problems before they manifest into more serious events.



**Bombardier, CL-600-2C10**  
**Auxiliary Power Unit Mounting Strut Cracked**

SDR #: 20161128012

***Subject:***

While performing maintenance on the aircraft auxiliary power unit (APU), maintenance personnel discovered a cracked APU mount strut. The upper left mounting strut was found cracked and the crack extended for approximately 9 inches in length longitudinally through the strut. The damaged strut was replaced.

***Transport Canada Comments:***

When performing maintenance, it is always good practice to inspect the surrounding area for any discrepancies. Alert maintenance staff discovered the cracked strut when the area was accessed for other maintenance.



## **Bombardier, CL-600-2D24 (RJ900)**

### **Rudder System - Power Control Unit Rod End Broken**

SDR #: 20161216017

#### ***Subject:***

Two instances of broken rudder power control unit (PCU) rod ends were reported recently as noted below:

Service Difficulty Report (SDR) 20161216017 - While performing maintenance task 27-23-01-710-802 (operational check of the rudder PCU's) the rudder surface did not move between its position limits. This was noted by cockpit position indication and visual evidence and occurred with hydraulic system #3 energized. Upon closer inspection, the #3 PCU rod end was found broken. The event did not result in a ground/flight interruption.

SDR 20150842013 – The flight crew reported that during functional checks at the gate, the rudder would not make full travel on one of the hydraulic systems when checked one system at a time. Maintenance found the #1 PCU rod end sheared off. Maintenance replaced the PCU and addressed the damage and re-rigged the system.

#### ***Transport Canada Comments:***

The rudder PCU rod end assembly is similar to the elevator PCU rod end assembly where more than (2) events have occurred. This article is intended to promote operator awareness of these types of failures of the rod end bearing. Operation of the rudder PCUs with a seized bearing could result in the rod end assembly shearing off the actuator as a result of overload. Seizure of the rod end bearing is known to have occurred after a prolonged period of storage yet also occurred when no periods of storage were recorded in the aircraft records.

Transport Canada advises operators to inspect PCU rod end bearings to determine if they are seized before returning an aircraft to service after a prolonged period of storage and consider adding inspections to their maintenance program to more quickly detect rod end bearing failure (seizure or shearing). As noted in the subject SDR 20150824013 text above, a flight crew flight control function test can detect the fault without waiting for the maintenance inspection check interval as noted in the other SDR.

There are currently two other articles on similar issues:

An article is currently being published on the RJ700/900/1000 model aircraft for the elevator PCU rod end failures. Bombardier is also in the process of issuing a service bulletin and TCCA regulatory action is pending on that issue.

The second article was published for the CRJ 100/200/CL850 model aircraft where both elevator and rudder system PCU rod end failures were found.

Please continue to submit SDRs for seized or sheared rod end bearings. TCCA continues to monitor this issue.



**de Havilland – Canada, DHC-8-400**

**Broken Aileron Cable**

SDR #: 20170523012

***Subject:***

During the pre-flight check walk around inspection, the right hand outboard aileron was found drooping as compared to the left hand outboard aileron. While performing an inspection on the control cable, they found that one of the cables sections was broken.

The last detailed visual inspection task card 27-900-705-A01 and tension check task card 27-900-706-A01 accomplished was completed 47 flight hours previous to the event. The above tasks are scheduled to be completed at a 2500 hour interval from when the cable was installed.

The cable is part number 82742412-001. The cable was replaced and the aircraft returned to service.

***Transport Canada Comments:***

A reminder when inspecting cables, ensure the entire section of the cable including areas that are hard to see are inspected properly. Keep in mind that the control cable has to last safely until the area is inspected again and in this case there was an expectation for this cable to last 2500 hours before re-inspection.



# Engine

## **Austro Engine, E4-A**

### **Engine Failure Due To Foreign Object Debris**

SDR #: 20170106003

#### ***Subject:***

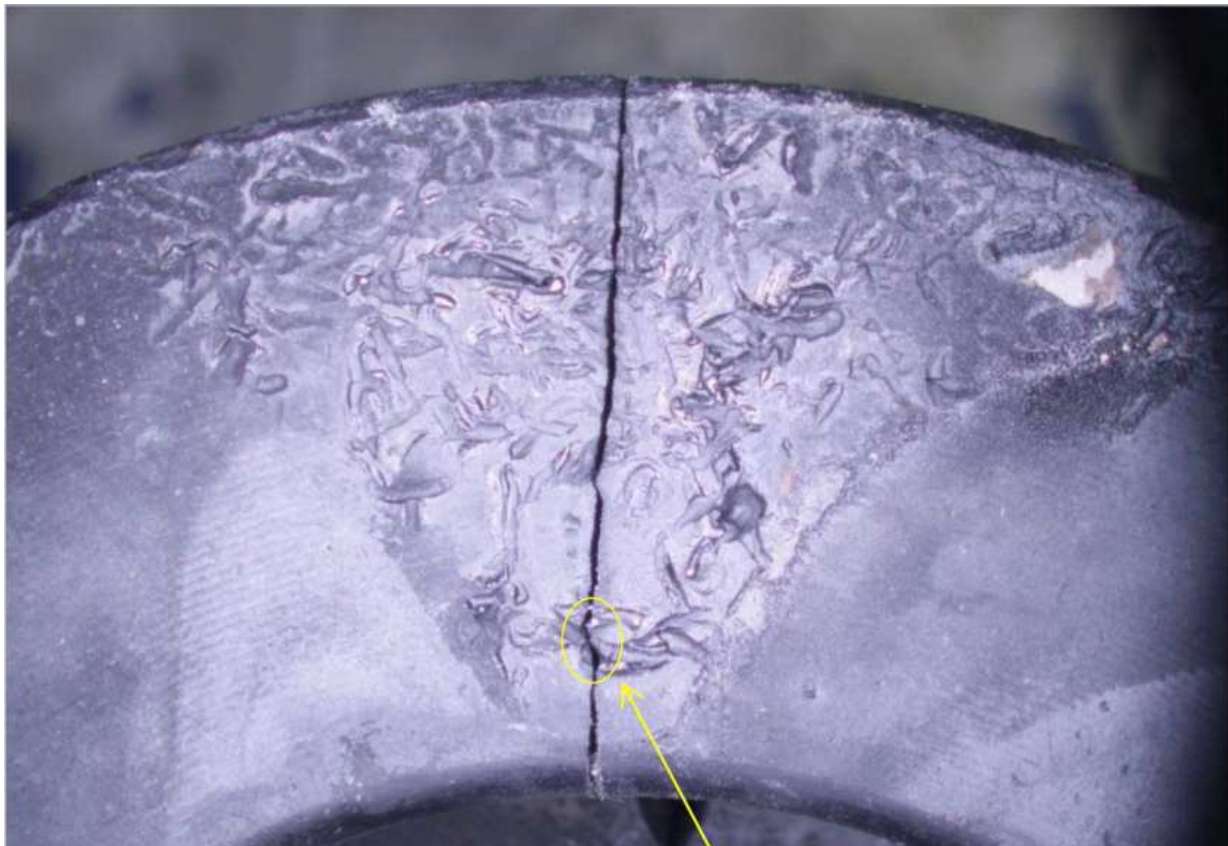
While cruising/descending at 9000 feet, the pilot observed dropping oil pressure and increasing oil temperature. Failure code warnings were also observed. The pilot landed the aircraft, which sustained some minor damage. The lower cowl and underside of the aircraft were contaminated with engine oil.

#### ***Transport Canada Comments:***

An engine investigation revealed that a foreign object had entered one of the cylinders and damaged the piston. This resulted in the piston cracking and allowing combustion gasses to pressurize the crankcase thereby forcing out the engine oil.

The source of the foreign object was not known however the evidence left behind on the piston indicated that it may have been caused by a piece of lockwire.

It is important for Aircraft Maintenance Engineers to be certain that the areas surrounding critical areas be cleaned of any foreign materials following maintenance activities.





## **AVCO Lycoming, IO-540-K1B5**

### **Connecting Rod Bushing Failure**

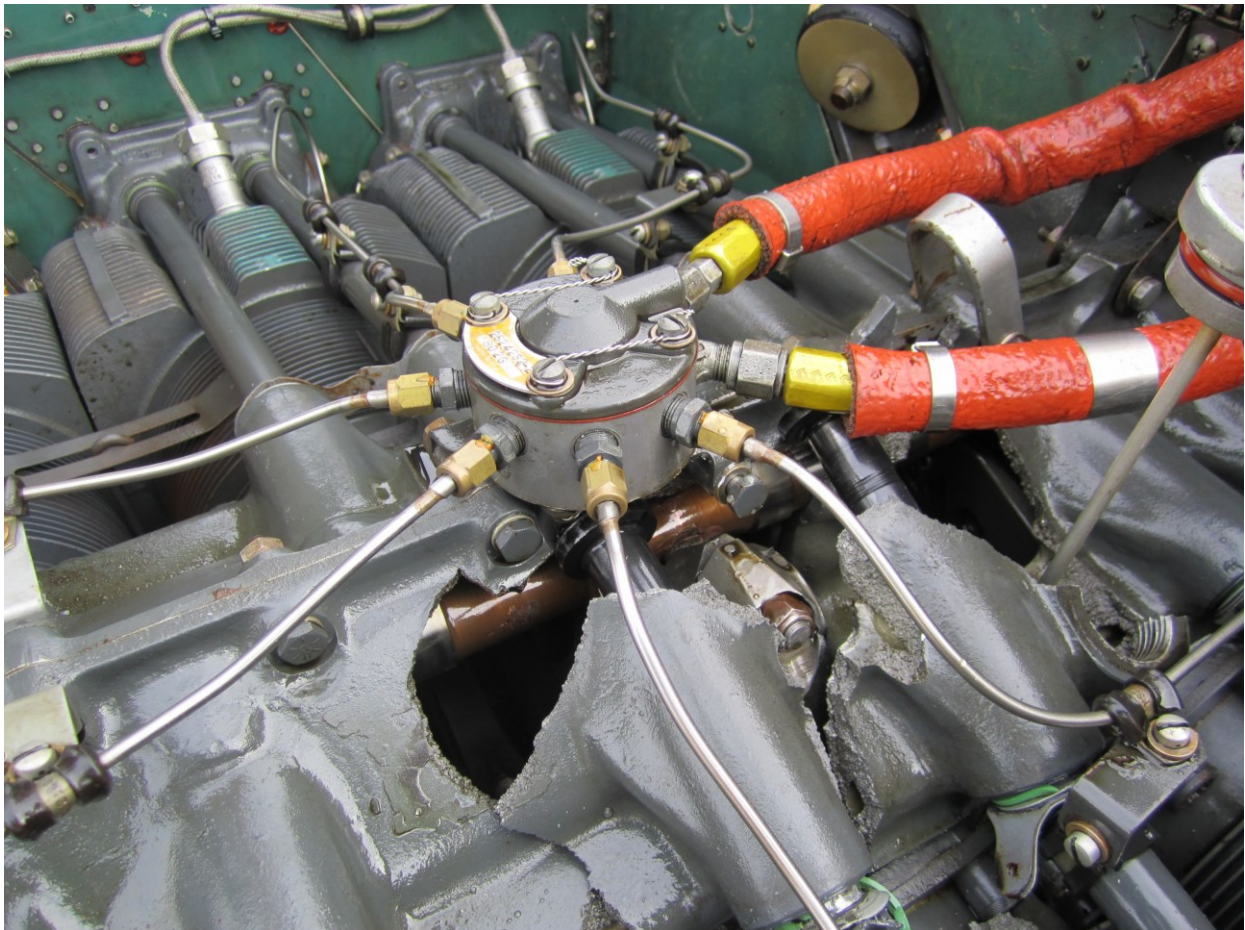
SDR #: 20170404111

#### ***Subject:***

During climb to altitude, the left hand engine sputtered and shutdown. The aircraft returned for landing without further incident. A visual inspection conducted by the pilot revealed a catastrophic failure in the top of the crankcase.

#### ***Transport Canada Comments:***

The manufacturer, Lycoming, has issued Mandatory Service Bulletin 632B to identify and remove from service certain connecting rods with non-conforming small end bushings. The Federal Aviation Administration (FAA) has issued Airworthiness Directive 2017-16-11 to mandate the inspections and actions listed in the Lycoming Service Bulletin. Transport Canada urges the report of any related service difficulties found on engines not listed in the models affected section of Mandatory Service Bulletin 632B.



**Pratt & Whitney – USA, JT8D-17**  
**Engine Shutdown Due to Oil Loss from Loose Fitting**

SDR #: 20170711020

***Subject:***

We have a reported precautionary inflight shutdown of this engine due to indication of oil quantity loss. Emergency was declared at destination airport and the aircraft landed without additional incident. More information will be uploaded when our investigation progresses.

***Transport Canada Comments:***

Investigation into this event revealed that a loose connector tube was the cause of the leak. This event appears to be a “human factors” related issue as maintenance had been accomplished on the affected area prior to the oil loss.

A safety management system can help prevent this and other similar type events by documenting, investigating and determining possible means of prevention. This must all be done in a non-punitive fashion that can bring everyone involved together to raise awareness and promote a safety culture.

**Pratt & Whitney – Canada, PT6A-114A**  
**Missing or Forgotten Bracket Causes Engine Shutdown**

SDR #: 20170718006

***Subject:***

This engine was removed and shipped for repair after the crew reported an in-flight shutdown on final approach, about half a mile from touch down. Efforts to restore power were not successful and a glide approach was successfully executed.

Upon examination of the engine, it was noted that the fuel pressure tube from the fuel control unit to the fuel flow divider had chafed through where it passes through the rear fire shield. The engine was received with this pipe loosely installed as it had been disturbed by the customer and all the hardware as well as the insulation plates and seals were not present for evaluation. It was also noted that the bracket, part number (P/N) 3027046, used to secure the fuel pressure tube coupling to the accessory gearbox "G" flange was not installed.

The root cause of the fuel pressure tube chafing on the rear fire shield was determined to be the fuel pressure tube bracket P/N 3027046 not being installed. This resulted in the fuel pressure tube not being correctly aligned and applying pressure to the rear fire shield seals. The seals eventually failed, allowing the tube to come into contact with the fire shield.

***Transport Canada Comments:***

It was not determined when this bracket was omitted. It is likely that it was missed during some maintenance activity such as an engine change or major inspection. Maintainers must be aware of build specifications and service bulletin status when installing an engine or when conducting maintenance. They must also ensure that the engine is in the correct configuration.



**Teledyne Continental, IO-240-B**  
**Corroded Weld on Oil Sump Causing Leak**

SDR #: 20170623009

***Subject:***

The aircraft was snagged for an oil leak. Investigation found pin holes in the lower part of the oil sump close to the drain plug. The holes were in a weld that is visible externally, but that is for an internal support rod. The sump was replaced and the aircraft released with no leaks.

***Transport Canada Comments:***

Any components installed on aeronautical products that are not 'life limited' are operated 'on condition'. That is to say that the part must conform to its design specifications and be free of defects (cracks, excessive wear, corrosion etc.). The manufacturer will normally set limits that the unit must fall within or else the part must be replaced. In the case mentioned above, this unit was an 'on condition part' and was deemed eligible for re-installation at overhaul. The corrosion that caused the leak was either not present at that time or was missed due to the fact that it was difficult to see or internal in the weld. Transport Canada reminds maintainers to be certain that parts are in conformance with their design specifications when inspecting them for re-installation.

# **Rotorcraft**

**Bell Textron - Canada, 206B**

**Cracked Tension Torsion Strap Urethane Coating**

SDR #: 20170808010

## ***Subject:***

During a routine 3 year calendar tension/torsion strap change, cracks were found in the urethane casing of the strap. This exposes the stainless steel wires to the elements.

## ***Transport Canada Comments:***

Cracks in the urethane protective coating of any tension/torsion strap could lead to internal corrosion of the straps. Visual inspection of the straps should be conducted whenever the opportunity is available to do so. The Australian Civil Aviation Authority has issued Airworthiness Bulletin 63-009 recommending inspection of the straps for cracks in the coating. Similarly, Bell Helicopter has issued Alert Service Bulletin 206-13-130 introducing a reduction to the life limit and removal of some part numbered straps. If cracks are found in the urethane coating of any manufactures tension/torsion straps please submit a Service Difficulty Report for each occurrence.



## **Equipment Airworthiness Directives (ADs)**

Transport Canada (TC) endeavours to send copies of new Airworthiness Directives (ADs), which are applicable in Canada to the registered owners of the affected products.

Equipment/appliance ADs are often only distributed to our regional offices because the owners of aircraft affected by this type of AD are not generally known.

Aircraft Maintenance Engineers (AMEs) and operators of the affected products are encouraged to obtain further information or a copy of the ADs from their regional TC office, their local Transport Canada Centre (TCC), their Principal Maintenance Inspector (PMI), or from the Civil Aviation AD website at: [www.tc.gc.ca/cawis-swimn](http://www.tc.gc.ca/cawis-swimn)

<b>Manufacturer</b>	<b>AD Number</b>	<b>Origin</b>	<b>Description</b>
BOMBARDIER ROTAX	2017-0208	EU	ATA 85 – RECIPROCATING ENGINE – VALVE PUSH ROD ASSEMBLY – INSPECTION / REPLACEMENT
HONEYWELL	2017-0196	EU	ATA 34 – NAVIGATION – TRAFFIC COLLISION AVOIDANCE SYSTEM PROCESSOR – MODIFICATION (SOFTWARE UPDATE) / REPLACEMENT
ROCKWELL COLLINS	2017-22-14	US	ATA 34 - NAVIGATION - COASTING (EXTRAPOLATED STALE DATA) OF AUTOMATIC DEPENDENT SURVEILLANCE- BROADCAST DATA (POSITION/VELOCITY DATA).
SCHROTH SAFETY	2017-0225	EU	ATA 25 – EQUIPMENT / FURNISHINGS – SEAT RESTRAINT SYSTEMS – AFM AMENDMENT / MODIFICATION

## **FAA Special Airworthiness Information Bulletins (SAIB)**

A Federal Aviation Administration (FAA) SAIB is an information tool that alerts, educates, and makes recommendations to the general aviation community. It is non-regulatory information and guidance that does not meet the criteria for an Airworthiness Directive (AD). [www.faa.gov/aircraft/safety/alerts/SAIB/](http://www.faa.gov/aircraft/safety/alerts/SAIB/)

<b>SAIB Number</b>	<b>Make/Company</b>	<b>Subject</b>	<b>Issue Date</b>
CE-18-10	Boeing Company, The	Fuel System - Selector Valve Placard	2018-02-09
CE-18-11	M7 Aerospace LLC	Flight Controls, Elevator Control System	2018-02-09
HQ-18-09	Henkel	Aircraft Structures – Alodine Coating	2018-02-05
HQ-18-08R1	Fuel	Engine Fuel and Control – Operation with Contaminated Jet Fuel	2017-12-26
HQ-18-08	Fuel	Engine Fuel and Control – Operation with Contaminated Jet Fuel	2017-12-20
CE-18-07	Aircraft	Exhaust Turbocharger; V-band Couplings Used in Exhaust Systems on Turbocharged Reciprocating Engine Powered Aircraft	2017-12-14
CE-18-06	Air Tractor, Inc.	Flight Controls, Rudder Control System	2017-12-01

## **EASA Safety Information Bulletin (SIB)**

A European Aviation Safety Agency (EASA) SIB is an information tool that alerts, educates, and makes recommendations to the general aviation community. It is non-regulatory information and guidance that does not meet the criteria for an Airworthiness Directive (AD). <http://ad.easa.europa.eu/sib-docs/page-1>

<b>SIB Number</b>	<b>Subject</b>	<b>Issue Date</b>
2018-06	Incorrect Airport Surface Approaches and Landings	2018-02-19
2018-05	Penny & Giles Aerospace Limited - Multi-Purpose Flight Recorders	2018-02-08
SAFO18001	Textron (Beech) King Air 90-Series Airplanes - Boost Pump Failure and CROSSFEED	2018-02-08
2018-04	Environmentally Assisted Cracking in certain Aluminium Alloys	2018-02-02
2018-03	Carriage and use of Automatic External Defibrillators	2018-01-30
2017-17R1	Kobe Steel Ltd Material – Falsified Inspection Data	2018-01-24
2018-02	Runway Surface Condition Reporting	2018-01-18
2018-01	Information on Materials Used for Runway and Taxiway De/Anti-Icing	2018-01-09
BEA-2017-03	Embraer EMB-135 and EMB-145 Aeroplanes - Electrical wiring terminations	2017-12-22
SAFO17013	Rockwell Collins Flight Management Systems Pro Line 4 and Pro Line 21 Navigation Databases	2017-12-20
2017-04R1	Safety Precautions Regarding the Transport by Air of Portable Electronic Devices containing Lithium Batteries carried by Passengers	2017-12-19
NE-17-26	Avidyne TAS600A, TAS600, and 9900BX Traffic Advisory System (TAS) - Misleading Intruder Aircraft Vertical Trend	2017-12-18
2017-21	Aircraft Industries L 410UVP-E20 aeroplanes - Check of the Engine and Propeller Control System	2017-12-15
2017-20	Slow Rotation Take-off	2017-11-27
2017-19	Textron Aviation (Cessna- and Reims-manufactured) single-engine Aeroplanes - Pilot and Co-Pilot Seat Secondary Stop – Modification	2017-11-27

## Service Difficulty Reports (SDR)

Service Difficulty Reports are submitted by Aircraft Maintenance Engineers (AMEs), owners, operators and other sources to report problems, defects or occurrences that affect aircraft airworthiness in Canada.

Make/Model	Part Name	Part Number	Part Condition	SDR No.
AIRCRAFT				
AERO COMMANDER				
690	FRAME	21002443	CRACKED	20171220006
690A	FRAME	31002443	CRACKED	20171220008
690B	AILERON CARRY THROUGH CABLE	500012241	FREYED	20171213003
AEROSPATIALE				
ATR 42 300	PITCH UNCOUPLING MECHANISM	S2738194101200	FAILED	20171222013
ATR 42 300	TEE FITTING	MS21905W6	CRACKED	20171221011
ATR 42 300	LANDING GEAR LEVER	F96GA0102	STIFF	20171219001
ATR 42 300	NOSE WHEELS	5068582	UNSERVICEABLE	20171105003
ATR 42 300	PROXIMITY SWITCH	D228780001	UNSERVICEABLE	20171122004
ATR 42 300	ELECTRONIC FLIGHT INSTRUMENT SYSTEM SCREEN	7003110912	UNSERVICEABLE	20171012010
ATR 42 300	FORMED PART	S53573201210	CRACKED	20171217001
ATR 42 300	FRAME 41	S53672410234	CRACKED	20171212001
ATR 42 300	PROPELLER BRAKE	FE1595007	BEYON REPAIR	20171216001
ATR 42 320	DOOR STRUCTURE	16S52176001012	CRACKED	20171006008
ATR 42 500	STARTER/GENERATOR	8260123	CATASTROPHIC FAILURE	20171223001
ATR 42 500	HYDRAULIC PUMP	4019501	UNSERVICEABLE	20171003002
ATR 42 500	GEAR SELECTOR VALVE	10053873Y00	UNSERVICEABLE	20171024034
ATR 42 500	NAV LIGHT ASSEMBLY	S5731005100500	UNSERVICEABLE	20171225001
ATR 42 500	FRAME	S53871305200	CORRODED	20171222001



<b>Make/Model</b>	<b>Part Name</b>	<b>Part Number</b>	<b>Part Condition</b>	<b>SDR No.</b>
ATR 42 500	SKIN	S53671407236	CORRODED	20171212004
ATR 42 500	COWL PANEL	S5411252600601	UNSERVICEABLE	20171105002
ATR 42 500	FITTING	S55374974	CORRODED	20171222003
ATR 42 500	FITTINGS		CORRODED	20171227004
ATR 42 500	FITTINGS		CORRODED	20171222012
ATR 42 500	FIXED PANEL	S57210911201	CORRODED	20171213008
ATR 42 500	PLATE/SKIN		NOT REPORTED	20171108004
ATR 42 500	SKIN	S57214356201	CORRODED	20171214002
ATR 42 500	SKIN	S57215358200	CORRODED	20171214004
ATR 42 500	SKIN	S57215358201	CORRODED	20171220009
ATR 42 500	BRUSH BLOCK	8205391	FULL OF CARBON	20171216002
ATR 72 202	WIRING HARNESS		CHAFED	20171027015
ATR 72 202	WINDOW HEAT TERMINAL BLOCK		ARCING	20171012009
<b>AEROSPATIALE HC</b>				
AS 350B2	STARTER/GENERATOR	150SG117Q	SHAFT SHEARED	20171109005
AS 350B2	STARTER/GENERATOR	150SG117Q	SHAFT SHEARED	20171109006
AS 350B2	BOOST PUMP	P94B12209	LOW PRESSURE	20171125001
AS 350B3	DART BAGGAGE EXTENDER	D350604041	ALMOST NEW	20171114010
AS 350B3	HYDAULIC PUMP DRIVE SYSTEM	350A35013201	BEARING STIFF	20171031006
<b>AGUSTA</b>				
A109S	BOLT	AN17414	WORN	20171128007
AW119 MK II	DIRECT/CURRENT ELECTRICAL BOX	109072999105	FAULTY	20171023006
AW139	BUSHING		NEW	20171024022
AW139	RIGHT-HAND WINDSHIELD	4G5610V00231	CRACKED	20171117008
<b>AIR TRACTOR</b>				
AT 502B	BRAKE DISC	16458F	CRACKED	20171102003

<b>Make/Model</b>	<b>Part Name</b>	<b>Part Number</b>	<b>Part Condition</b>	<b>SDR No.</b>
AT 802A	CHANNEL-DRAG STRUT ATTACHMENT	13A01374001	UNSERVICEABLE	20171215015
AIRBUS				
A310 308	TELESCOPIC DUCT	C231098104	NOT REPORTED	20171117011
A310 308	FEEDBACK CABLE	9649M41P08	BROKEN	20171019001
A319 112	AUXILIARY POWER UNIT		NOT REPORTED	20171211001
A319 114	BLOWER EXTRACTION COOLING FAN	4101415	FAILED	201711103014
A319 114	SWITCH	D2731009900000	FAILED	20171030009
A319 114	VACUUM GENERATOR	14330375	FAILED	20171211004
A319 114	HYDRAULIC PUMP	3031863001	LEAKING	20171212003
A319 114	APS3200 QUICK ENGINE CHANGE AUXILIARY POWER UNIT	49200051	FAILED	20171025018
A319 114	APS3200 QUICK ENGINE CHANGE AUXILIARY POWER UNIT	49200051	FAILED	20171127008
A320 211	EQUIPMENT		NOT REPORTED	20171122008
A320 211	AVIONIC EQUIPMENT VENTILATION COMPUTER	87292325V07	FAILED	20171108003
A320 211	FLIGHT MANAGEMENT GUIDANCE COMPUTER	B398BAM0209	FAILED	20171002002
A320 211	NOSE WHEEL	ACD199421	FAILED	20171229013
A320 211	BRAKING AND STEERING CONTROL UNIT STD L4-9B	E21327107	FAILED	20171114001
A320 211	AIR DATA INERTIAL UNIT	HG1150AC07	FAILED	20171030011
A320 211	HYDRAULIC UNIT	TY209201	FAILED	20171103011
A320 214	PICK OFF POSITION UNIT	9028A000401	FAILED	20171120008
A320 214	AUXILIARY POWER UNIT 131-9A ENGINE	38007081	FAILED	20171031002
A321 211	FILTER OZONE	20499001	NOT REPORTED	20171030016
A321 211	ASSEMBLY HOSE	112441507	LEAKING	20171003008

<b>Make/Model</b>	<b>Part Name</b>	<b>Part Number</b>	<b>Part Condition</b>	<b>SDR No.</b>
A330 243	OVEN	72067000M	NOT REPORTED	20171114005
A330 243	CONTROL UNIT	YG10104	BURNT	20171124007
A330 243	FUEL METERING UNIT	FMU70201	NOT REPORTED	20171130016
A330 343	RECIRCULATION FAN	VR410004	FAILED	20171229014
A330 343	WHEEL TACHOMETER	C20105100	FAILED	20171115005
<b>BAE - RAYTHEON</b>				
HAWKER 800XP	BAROMETRIC VALVE	K380022	OVERHAUL	20171123005
<b>BAE - UK</b>				
AVRO 146RJ 100	WHEEL MAIN OUTBOARD HALF	AHA2013	CRACKED	20171114008
AVRO 146RJ 100	BRACKET - INNER RIGHT-HAND ONLY	HC572H0752001	CORRODED	20171102010
<b>BEECH</b>				
100	BRAKE LINE	11105800	NOT REPORTED	20171017014
1900D	EQUIPMENT		NOT REPORTED	20171128002
1900D	EQUIPMENT		NOT REPORTED	20171207019
1900D	EQUIPMENT		NOT REPORTED	20171211005
1900D	SWITCH	MS250851S157	HIGH RESISTANCE	20171205004
1900D	TERMINAL BLOCK	1143610663	NEW	20171214005
1900D	WINDSCREEN	10138402525	CRACKED	20171227002
1900D	PRINTER CIRCUIT BOARD	10136457217	OVERHAUL	20171016004
1900D	TRANSDUCER RUDDERBOOST	1303800033	OVERHAUL	20171221003
1900D	ELEVATOR BELLCRANK	101524142	UNSERVICEABLE	20171108020
1900D	PUMP AUXILIARY TANK	1183890065	OVERHAUL	20171019013
1900D	FUEL INDICATOR		NOT REPORTED	20171016005
1900D	INSTRUMENT WIRING		NOT REPORTED	20171004001
1900D	HOSE ASSEMBLY	1013880167	NEW	20171030014
1900D	SWITCH PRESSURE	1203P0005	NEW	20171023004

<b>Make/Model</b>	<b>Part Name</b>	<b>Part Number</b>	<b>Part Condition</b>	<b>SDR No.</b>
1900D	RELAY	LMD5001P	NEW	20171120014
1900D	HOSE ASSEMBLY	MS2874140240	LEAKING	20171108001
1900D	UPLOCK SWITCH	H111541	FAILED	20171027010
1900D	LIFT TRANSDUCER	370110	OVERHAUL	20171116004
1900D	DIRECTIONAL GYRO	6226136002	FAILED	20171017001
1900D	TRAFFIC COLLISION AVOIDANCE SYSTEM INDICATOR	71015420801	FAILED	20171212014
1900D	SPAR CAP LEFT-HAND & RIGHT-HAND	10164001134	CRACKED	20171024025
1900D	WING SPAR		NOT REPORTED	20171003001
1900D	FLAP SKIN	10116000161	CRACKED	20171212013
1900D	PRINTER CIRCUIT BOARD CONNECTOR	11236401733	LOOSE WIRE	20171120005
1900D	HIGH PRESSURE SWITCH	5038912121	INTERMITTENT	20171030013
200	HOOK-DOWN LOCK	50810338	BROKEN	20171025025
200	UPPER LATCH PIN	504301773	SHEARED	20171103027
99	LANDING GEAR		NOT REPORTED	20171120015
99	NOSE GEAR ACTUATOR	1158200465	AS REMOVED	20171120017
99A	EMERGENCY LOCATOR TRANSMITTER ME406	4536603	NOT REPORTED	20171208009
A100	TORQUE KNEE	508103237	BROKEN	20171025023
A100	CYLINDER	998201005	OVERHAULED	20171213004
A100	FLEX COUPLING	106200H1012	CRACKED	20171129005
A100	HOSE	62400040310	CRACKED	20171002012
B200	LINK	1015210241	WORE	20171128004
B200	CHECK VALVE	847899	OBSTRUCTED	20171007001
B200	TIRE	265K081	NOT REPORTED	20171004004
B200	SWITCH	1013646281	FAILED	20171017012

<b>Make/Model</b>	<b>Part Name</b>	<b>Part Number</b>	<b>Part Condition</b>	<b>SDR No.</b>
B200	CLEVIS PIN	1313232C15	SHEARED	20171010016
B200	SUPPORT MOUNT	1155550211	NOT REPORTED	20171012011
B200	FUEL CONTROL UNIT	324476814	NOT REPORTED	20171128001
B200GT	ADAPTER	1009200697	SERVICEABLE	20171121007
B300	LOWER SPAR CAP	10112012731	DE-BONDING	20171208004
B300	SUBSTANDARD PARTS		NOT REPORTED	20171123006
B300	CAP		WORN	20171103026
B300	NP TACHOMETER GENERATOR	503890571	SHAFT SHEARED	20171114004
B300C	DOOR AIRSTAIR	1014301411	CRACKED	20171027017
B99	HYDRAULIC PUMP	206151	STIFF	20171114009
C23	STARTER		NOT REPORTED	20171208001
C23	STARTER		NOT REPORTED	20171208002
<b>BELL TEXTRON - CAN</b>				
206B	STARTER/GENERATOR	150SG117Q	UNSERVICEABLE	20171010012
206B	VERTICAL FIN SUPPORTS	206031426001	CRACKED	20171224001
206B	MAIN ROTOR BLADE	206010200137	UNSERVICEABLE	20171026012
206B	TENSION-TORSION STRAPS	2AA310004101	FAULTY	20171124015
206B	COLLAR	206011360	FRACTURED	20171120018
206L	FLAP RESTRAINER SUPPORT	206010191103	USED	20171109009
407	AIR CONDITIONING UNIT		NOT REPORTED	20171017009
407	EQUIPMENT		NOT REPORTED	20171211021
407	EQUIPMENT		NOT REPORTED	20171211022
407	BRUSHES	230811834	IRREGULAR WEAR	20171002014
407	BEVEL GEAR	407040035101	CRACKED	20171005005
429	ROD ANTENNA EMERGENCY LOCATOR TRANSMITTER	110338	WORN	20171031008

<b>Make/Model</b>	<b>Part Name</b>	<b>Part Number</b>	<b>Part Condition</b>	<b>SDR No.</b>
429	EXTERNAL DRIVE SHAFT	20546	SHEARED	20171116008
429	AFT FUSELAGE PANEL	429030621131	CRACKED	20171031007
429	BRACKET	429035704111	CRACKED	20171010018
505	ELECTRICAL POWER SYSTEM UNIT	14312	DEFECTIVE	20171017013
505	GARMIN ENGINE AND AIRFRAME	110083105	FAULT	20171108009
505	GARMIN ENGINE AND AIRFRAME	110083105	FAULT	20171109002
505	GARMIN ENGINE AND AIRFRAME	110083105	FAULT	20171109003
505	P-CLAMP	MS21919WCF20	LOOSE	20171115002
505	FLIGHT CONTROL		NOT REPORTED	20171123004
505	D1917 COOLER ASSEMBLY	D19170010	LEAKING	20171016012
<b>BELL TEXTRON - USA</b>				
212	SUPPORT CASE	212040054105	CRACKED	20171109015
412CF	CLAMP	NAS1712D1024N	MISSING	20171026009
412EP	SPAR ASSEMBLY	205030856167	CORRODED	20171004009
412EP	HOSE ASSEMBLY	70061L275W210A	LEAKING	20171027019
412EP	INNER COUPLING	212040657003	CORRODED	20171004008
412EP	INNER COUPLING	214040184001	PITTED	20171004007
<b>BOEING</b>				
737 406	ELECTRIC MOTOR DRIVEN PUMP	5718607	SEIZED	20171002005
737 406	TOW LINK	69412781	UNSERVICEABLE	20171002003
737 406	FRAME 500	6546533	CRACKED	20171106008
737 406	FRAME 500A	6546593	CRACKED	20171106007
737 406	FLOOR BEAM	6546811	CORRODED	20171108019
737 406	L1 WINDOW	5893543139	UNSERVICEABLE	20171105001
737 406	FAIRING		CORRODED	20171106006
737 406	SKIN	65C25204	CORRODED	20171113005

<b>Make/Model</b>	<b>Part Name</b>	<b>Part Number</b>	<b>Part Condition</b>	<b>SDR No.</b>
737 436	CROSSBEAM ASSEMBLY	310A10227	FRETTING	20171001001
737 505	HOUSING ASSEMBLY	65C268636	CRACKED	20171205005
737 6CT	WINDOW		NOT REPORTED	20171128013
737 76N	LANDING GEAR HANDLE		NOT REPORTED	20171025021
737 76N	SENSOR-PROXIMITY	189929	NOT REPORTED	20171228002
737 8BK	#2 BRAKE		NOT REPORTED	20171218004
737 8BK	BRAKE		NOT REPORTED	20171221010
737 8CT	LANDING GEAR SELECTOR VALVE	1FA011342	UNSERVICEABLE	20171121016
737 8CT	MAIN WHEEL	26123111	FAILURE	20171016013
737 8CT	FIRST OFFICERS #2 WINDOW PAIN	58935588	SHATTERED	20171107008
737 8Q8	FUSELAGE FRAME	141A81512	CORRODED	20171116009
757 236	SUPPLY TUBE ASSEMBLY	312N510133	NOT REPORTED	20171012016
757 2B7	HYDRAULIC POWER SYSTEM		NOT REPORTED	20171004006
757 2B7	FUEL PUMP LOW PRESSURE SWITCH	21SN04159C	NOT REPORTED	20171222002
767 223	VALVE-CHECK	59855	NOT REPORTED	20171002010
767 323	WINDOW ASSEMBLY	141T480014	NOT REPORTED	20171109014
767 333	YAW DAMPER ACCELEROMETER	90000031	FAILED	20171004011
767 333	RIGHT-HAND #2 OPENABLE WINDOW	141T483518	CRACKED	20171120006
767 338	TEMPERATURE CONTROL		NOT REPORTED	20171124016
767 338	EMERGENCY OFF WING SLIDE	101656305	UNSERVICEABLE	20171130017
767 338	L1 DOOR ESCAPE SLIDE	101651303	UNSERVICEABLE	20171130018
767 35H	PACKING	NAS16128	LEAKING	20171215014
767 375	MODE CONTROL PANEL	6224717004	FAILED	20171213007
767 375	INDICATOR	7586630	FAILED	20171120007
767 375	HYDRAULIC DRAIN LINE	312T210010	LEAKING	20171030008
767 375	MAIN LANDING GEAR CARBON WHOLE	C20509000	FAILED	20171227001

<b>Make/Model</b>	<b>Part Name</b>	<b>Part Number</b>	<b>Part Condition</b>	<b>SDR No.</b>
	WHEEL			
767 375	ENGINE		NOT REPORTED	20171221002
767 38E	CABIN AIR OUTFLOW VALVE	60683221	FAILED	20171218008
767 38E	FLIGHT CONTROL COMPUTER	6224591512	FAILED	20171110007
767 39H	HOSE ASSEMBLY	AS1108K0165	NOT REPORTED	20171110013
777 333ER	RECIRCULATION FAN	4100945A	FAILED	20171103012
777 333ER	ELEVATOR POWER CONTROL UNIT	15443003	LEAKING	20171011012
777 333ER	SWITCH EXTINGUISHING SYSTEM	D73106001	FAILED	20171011014
787 8	OUTLET CHECK VALVE	7010105H01	NOT REPORTED	20171214001
787 8	RIB	I52Z6331	NOT REPORTED	20171017003
787 9	GENERATOR CONTROL UNIT	7000053H03	FAILED	20171019002
787 9	REMOTE POWER DISTRIBUTION UNIT / SECONDARY POWER DISTRIBUTION UNIT	7000278H01	FAILED	20171219011
<b>BOMBARDIER</b>				
BD 100 1A10	MID FUSE	1005340000001	NOT REPORTED	20171019009
BD 100 1A10	COOLING SYSTEM		NOT REPORTED	20171205007
BD 100 1A10	DIRECT CURRENT POWER CENTER TERMINALS		CORROSION	20171030018
BD 100 1A10	DIFFERENTIAL PROTECTION MONITORING SYSTEM 2 SENSOR	190GC03Y02	CORRODED	20171024023
BD 100 1A10	PRIMARY FLIGHT DISPLAY	HGS2150	NOT REPORTED	20171013008
BD 500 1A10	EPX CONNECTOR		MISSING LOCTITE	20171103028
BD 500 1A10	PFCC-4100	8222749501	INCORRECT SOLDER	20171117023
BD 500 1A10	AUTO THROTTLE		DESIGN ISSUE	20171120012
BD 500 1A10	AUTO THROTTLE		IMPROPER OPERATION	20171024024
BD 500 1A10	AUTO THROTTLE		NOT REPORTED	20171127007
BD 500 1A10	CONTACTOR	5915607106	CRACKED	20171117015



<b>Make/Model</b>	<b>Part Name</b>	<b>Part Number</b>	<b>Part Condition</b>	<b>SDR No.</b>
BD 500 1A10	GENERATOR -VARIABLE FREQUENCY	C07500043003	FAILED	20171016002
BD 500 1A10	POWER SYSTEM WIRING		NOT REPORTED	20171128014
BD 500 1A10	REMOTE ELECTRONIC UNIT	C05500026003	NOT REPORTED	20171207001
BD 500 1A10	REMOTE ELECTRONIC UNIT	C05500026003	NUISANCE FAULTS	20171117013
BD 500 1A10	LINEAR VARIABLE DIFFERENTIAL TRANSFORMER		DESIGN ISSUE	20171013001
BD 500 1A10	CHECK VALVE ASSEMBLY	2090199101	IMPROPER INSTALL	20171221007
BD 500 1A10	MOTIVE FLOW CHECK VALVE	2090200101	FAILED	20171017002
BD 500 1A10	SFIS-3900	8660205201	INVALID	20171128009
BD 500 1A10	CENTRAL WARNING	8222189011	MULTIPLE WARNING	20171025016
BD 500 1A10	ACTUATOR - RETRACT		IMPROPER ASSEMBLY	20171015001
BD 500 1A10	LANDING GEAR STEERING CONTROL UNIT	4142A000003	FAULTY	20171211006
BD 500 1A10	WIND SHEAR DETECT		FALSE ALERTS	20171120019
BD 500 1A10	SAFETY MANAGEMENT SYSTEM		FAULTY WARNING	20171110014
BD 500 1A10	FLIGHT MANAGEMENT SYSTEM	81003112B0002	FAILED IN FLIGHT	20171103010
BD 500 1A10	FLIGHT MANAGEMENT SYSTEM	81003112B0002	FAILED IN FLIGHT	20171201001
BD 500 1A10	FLIGHT MANAGEMENT SYSTEM SOFTWARE		FAULTY	20171115003
BD 500 1A10	BRACKET ASSEMBLY ELECTRICAL SYS	C02318520005	MISSING	20171117014
BD 500 1A10	LED WIRE AND OXYGEN GAUGE SUPPLY		CHAFING	20171005009
BD 500 1A10	STARTER MOTOR	27045062	ARCING	20171207002
BD 500 1A10	AIRCRAFT SUB-STANDARD PRODUCTS		NOT REPORTED	20171116002
BD 500 1A10	MANUALS		NOT REPORTED	20171113003
BD 500 1A10	FLIGHT DECK DOOR	C04400001N0017	HARD TO OPEN	20171129003
BD 500 1A10	FORWARD PASSENGER DOOR	C01518140001	HARD TO OPEN	20171130012
BD 500 1A10	FORWARD PASSENGER DOOR	C01518140001	HARD TO OPEN	20171130015

<b>Make/Model</b>	<b>Part Name</b>	<b>Part Number</b>	<b>Part Condition</b>	<b>SDR No.</b>
BD 500 1A10	GEAR DOOR ROD	C01605001	SAFE LIFE LIMIT	20171115001
BD 500 1A10	FILLET SEAL	C0120000001	MISSING	20171219009
BD 500 1A10	CABIN WINDOWS	C01840005003	FAILED	20171213001
BD 500 1A10	DRAG LINK	9993035501	DAMAGED	20171207004
BD 500 1A11	AUTOFLIGHT SYSTEM		ERRONEOUS SPEED	20171023005
BD 500 1A11	AUTOFLIGHT SYSTEM		NOT REPORTED	20171023001
BD 500 1A11	VARIABLE FREQUENCY GENERATOR ASSEMBLY	C07500043003	FAILED	20171215011
BD 500 1A11	STATIC INVERTER	118912	INTERMITTENT FAILURE	20171207003
BD 500 1A11	BATTERY CHARGER	C07500017003	FAILED IN FLIGHT	20171205003
BD 500 1A11	WIRE HARNESS		CHAFING	20171219005
BD 500 1A11	ON WATER EMERGENCY SLIDE	C01579610106	DID NOT DEPLOY	20171110008
BD 500 1A11	OVERWING SLIDE	C01579610106	FAULTY	20171006009
BD 500 1A11	SIDE STICK CONTROL	4901001010	NOT REPORTED	20171024014
BD 500 1A11	CENTRAL WARNING	8222189011	NOT REPORTED	20171108002
BD 500 1A11	RADIO ALTIMETER	8220615206	NOT REPORTED	20171030010
BD 500 1A11	FLIGHT MANAGEMENT SYSTEM	81003112B0302	FAIL	20171016001
BD 500 1A11	DOOR	C01518140001	NOT REPORTED	20171123001
BD 500 1A11	FORWARD PASSENGER DOOR	C01518140001	HARD TO OPEN	20171129002
BD 500 1A11	FORWARD PASSENGER DOOR	C01518140001	HARD TO OPEN	20171121004
BD 500 1A11	FORWARD PASSENGER DOOR	C01518140001	HARD TO OPEN	20171130013
BD 500 1A11	FORWARD PASSENGER DOOR ASSEMBLY	C01518140001	HARD TO OPEN	20171205002
BD 500 1A11	L1 DOOR	C01518140001	HARD TO OPEN	20171121001
BD 500 1A11	LATCH COVER ASSEMBLY	D714196505	FAILED	20171218002
BD 500 1A11	PASSENGER DOOR ASSEMBLY	C01518140001	HARD TO OPEN	20171211002
BD 500 1A11	PASSENGER DOOR ASSEMBLY	C01518140001	HARD TO OPEN	20171211011

<b>Make/Model</b>	<b>Part Name</b>	<b>Part Number</b>	<b>Part Condition</b>	<b>SDR No.</b>
BD 500 1A11	HARNESS SUPPORT BRACKET	C01386730005	SHORTED	20171214003
BD 500 1A11	AFT SERVICE DOOR	C01548440001	HARD TO OPEN	20171121002
BD 500 1A11	FITTING ASSEMBLY	C01605015N0007	LOOSE	20171003009
BD 500 1A11	CARGO SUPPORTING CLIP		MISSING	20171214006
BD 500 1A11	CABIN WINDOWS	C01840005003	FAILED	20171212008
BD 500 1A11	CABIN WINDOWS	C01840005003	FAILED	20171212005
BD 500 1A11	WINDOW		NOT REPORTED	20171211012
BD 700 1A10	EQUIPMENT		NOT REPORTED	20171003013
BD 700 1A10	FLIGHT MANAGEMENT SYSTEM		FAULTY	20171003011
BD 700 1A10	INTEGRATED FLIGHT INFORMATION SYSTEM		MALFUNCTION	20171012008
BD 700 1A10	INTEGRATED FLIGHT INFORMATION SYSTEM		MALFUNCTION	20171215018
BD 700 1A10	OXYGEN MASK LANYARD	289153	CROSS CONNECTED	20171128015
BD 700 1A10	BUSHING	GD24725503	ROTATING	20171205013
BD 700 1A10	OIL QUANTITY SENSOR		INTERMITTENT	20171205006
BD 700 1A11	VARIABLE FREQUENCY GENERATOR	GL51111039	SUMP DEPARTED	20171003006
BD 700 1A11	VARIABLE FREQUENCY GENERATOR	GL51111039	USED	20171109010
BD 700 1A11	MICROWAVE	400140901R	FAULTY	20171010005
BD 700 1A11	SAFETY DISC		FAULTY	20171127010
BD 700 1A11	REFUEL DEFUEL CONTROL PANEL	GP54110022	SHORTED	20171208008
BD 700 1A11	AIR DATA COMPUTER		SERVICED	20171019011
CL600 2B19 (RJ100)	OUTFLOW VALVE		FAULTY	20171205011
CL600 2B19 (RJ100)	INTEGRATED DRIVE GENERATOR	755469E	NOT REPORTED	20171127013
CL600 2B19 (RJ100)	ATTENUATOR	848133	DETACHED	20171026014
CL600 2B19 (RJ100)	DE-ICE SYSTEM		NOT REPORTED	20171024028

<b>Make/Model</b>	<b>Part Name</b>	<b>Part Number</b>	<b>Part Condition</b>	<b>SDR No.</b>
CL600 2B19 (RJ100)	SHOCK STRUT TUBE	16050115	CORROSION	20171005003
CL600 2B19 (RJ100)	NOSE LANDING GEAR STRUT	16050115	REQUIRED SERVICING	20171205009
CL600 2B19 (RJ100)	AFT PLANK PANEL	601R100428	CHAFING	20171006012
CL600 2B19 (RJ100)	FLAP VANE		STICKING	20171205008
CL600 2B19 (RJ100)	TRANSLATING COWL	2285020722850200	LOST IN DESERT	20171122013
CL600 2B19 (RJ440)	ALTERNATING CURRENT PACK VALVE	8084402	FAILED	20171024016
CL600 2B19 (RJ440)	PRESSURE SHUT-OFF VALVE	979998	NOT REPORTED	20171116006
CL600 2B19 (RJ440)	RELAY	K11HK	NOT REPORTED	20171002009
CL600 2B19 (RJ440)	RECIRCULATION FAN	GG670950227	FAILED	20171221004
CL600 2B19 (RJ440)	PRESSURE SELECTOR PANEL	2119764	NOT REPORTED	20171107002
CL600 2B19 (RJ440)	PRESSURE SHUT-OFF VALVE	3215622	FAULTY	20171207011
CL600 2B19 (RJ440)	PRESSURE SHUT-OFF VALVE	3215622	NOT REPORTED	20171122005
CL600 2B19 (RJ440)	FLIGHT CONTROL COMPUTER CARD	6229815904	FAILED	20171107004
CL600 2B19 (RJ440)	AIR DRIVEN GENERATOR AUTO DEPLOYMENT CONTROLER	82046	NOT REPORTED	20171108017
CL600 2B19 (RJ440)	HARNESS	601R579005	INTERMITTENT FAI	20171019006
CL600 2B19 (RJ440)	SENSOR VOLTAGE RELAY	B0804074001	FAULTY	20171024029
CL600 2B19 (RJ440)	GENERATOR CONTROL UNIT	720846D	FAILED	20171024011
CL600 2B19 (RJ440)	SMOKE DETECTOR	473597872219	WARNING	20171212010
CL600 2B19 (RJ440)	DUCT ASSEMBLY	14459101	NOT REPORTED	20171129008
CL600 2B19 (RJ440)	SUPPORT SPOILER MIXER	6009115411	CRACKED	20171031004
CL600 2B19 (RJ440)	AILERON/RUDDER TRIM PANEL ASSEMBLY	601R5122623	NOT REPORTED	20171010010
CL600 2B19 (RJ440)	PITCH TRIM SWITCH	30987224334	FAILED	20171024027
CL600 2B19 (RJ440)	HORIZONTAL STABILIZER CONTROL UNIT	706010	FAILED	20171116005
CL600 2B19 (RJ440)	PITCH TRIM SWITCH	9960013	NOT REPORTED	20171002011
CL600 2B19 (RJ440)	FLEX DRIVE SHAFT	1104SD100	BROKEN	20171222004

<b>Make/Model</b>	<b>Part Name</b>	<b>Part Number</b>	<b>Part Condition</b>	<b>SDR No.</b>
CL600 2B19 (RJ440)	BRAKE AND POSITION SENSING UNIT	855D100	FAILED	20171129009
CL600 2B19 (RJ440)	PRESSURE MANIFOLD	601R7523015	LEAKING	20171109004
CL600 2B19 (RJ440)	BLEED AIR LEAK CONTROL UNIT	20035008067	SUSPECT DEFECTIVE	20171012002
CL600 2B19 (RJ440)	ANTI-ICE CONTROLLER	11513361	FAULTY	20171221006
CL600 2B19 (RJ440)	MODULATING/SHUT-OFF VALVE	32144424	FAILED	20171208007
CL600 2B19 (RJ440)	THERMAL SWITCH	434419882	FAULTY	20171212011
CL600 2B19 (RJ440)	THERMAL SWITCH	601R593201	NOT REPORTED	20171107007
CL600 2B19 (RJ440)	COWL ANTI-ICE VALVE	3000130008722000	FAILED	20171211016
CL600 2B19 (RJ440)	COWL ANTI-ICE VALVE	300013000003	FAULTY	20171024019
CL600 2B19 (RJ440)	HEAT SENSING ELEMENT	355483255	FAULTY	20171010008
CL600 2B19 (RJ440)	MAIN LANDING GEAR FAIRING FITTING	601R3103612	LOOSE	20171214010
CL600 2B19 (RJ440)	STRUT ASSEMBLY	16050	FAULTY	20171024012
CL600 2B19 (RJ440)	SHOCK STRUT ASSEMBLY	16050	FAILED	20171006010
CL600 2B19 (RJ440)	LANDING GEAR CONTROL HANDLE ASSEMBLY	745502	NOT REPORTED	20171108005
CL600 2B19 (RJ440)	MAIN LANDING GEAR BRAKE ASSEMBLY	50105201	OVERHEAT	20171212012
CL600 2B19 (RJ440)	NOSE WHEEL STEERING ELECTRONIC CONTROL UNIT	16900107	INOPERATIVE	20171024032
CL600 2B19 (RJ440)	AIR DATA COMPUTER	8220372154	FAILED	20171121013
CL600 2B19 (RJ440)	ANGLE OF ATTACK SENSOR	C16258AB	NOT REPORTED	20171017007
CL600 2B19 (RJ440)	ANGLE OF ATTACK SENSOR	C16258AB	NOT REPORTED	20171017008
CL600 2B19 (RJ440)	STALL PROTECTION COMPUTER	3995100208	FAULTY	20171117010
CL600 2B19 (RJ440)	ALTITUDE AND HEADING REFERENCE SYSTEM COMPUTER	6229336400	NOT REPORTED	20171019007
CL600 2B19 (RJ440)	BLEED AIR LEAK CONTROL UNIT	20035008067	FAULTY	20171108007
CL600 2B19 (RJ440)	PRESSURE RELIEF SHUT-OFF VALVE	32156221	FAILED	20171010007
CL600 2B19 (RJ440)	PRESSURE RELIEF SHUT-OFF VALVE	32156221	NOT REPORTED	20171107006

<b>Make/Model</b>	<b>Part Name</b>	<b>Part Number</b>	<b>Part Condition</b>	<b>SDR No.</b>
CL600 2B19 (RJ440)	HEAT SENSING ELEMENT	355924400	NOT REPORTED	20171017006
CL600 2B19 (RJ440)	OIL PRESSURE SWITCH	38730016	NOT REPORTED	20171204003
CL600 2B19 (RJ440)	PASSENGER DOOR INNER SKIN	601R318027	CORRODED	20171010015
CL600 2B19 (RJ440)	PASSENGER DOOR INNER SKIN	601R317011	CORROSION	20171013013
CL600 2B19 (RJ440)	AFT LOWER PAN	601R38304375	CORRODED	20171024013
CL600 2B19 (RJ440)	LOWER PAN	601R3830291	CORRODED	20171218007
CL600 2B19 (RJ440)	SERVICE DOOR	601R3830291SN764	CORROSION	20171121010
CL600 2B19 (RJ440)	BONDED DOUBLER	601R310227	CORRODED	20171024010
CL600 2B19 (RJ440)	PRESSURE FLOOR SKIN	601R3114627	CRACKED	20171103025
CL600 2B19 (RJ440)	FLOOR SUPPORT FITTING	601R352891	CORRODED	20171218009
CL600 2B19 (RJ440)	THROTTLE PUSH/PULL CONTROL ASSEMBLY	1603730005	NOT REPORTED	20171122002
CL600 2B19 (RJ440)	START VALVE	898930	FAILED	20171130019
CL600 2C10 (RJ700)	TUBING	SH670432169SH670	NOT REPORTED	20171113006
CL600 2C10 (RJ700)	FLAP CONTROLLER LEVER	5911330	FAULTY	20171212009
CL600 2C10 (RJ700)	BRAKE AND POSITION SENSING UNIT	5912999	FAILED	20171019008
CL600 2C10 (RJ700)	MULTI-FUNCTION SPOILER POWER CONTROL UNIT	5120011	NOT REPORTED	20171016009
CL600 2C10 (RJ700)	ANGLE OF ATTACK	C16258AB	INOPERATE	20171211014
CL600 2C10 (RJ700)	WINDOW HEATER CONTROLLER	16598722187221	FAILED	20171211015
CL600 2C10 (RJ700)	INTEGRATED STANBY INDICATOR	C16221ZA01	FAILED	20171005012
CL600 2C10 (RJ700)	ELECTRONIC FLIGHT DISPLAY	6229810204	FAILED	20171214007
CL600 2C10 (RJ700)	NOSE LANDING GEAR AXLE PISTON ASSEMBLY	52103	NOT REPORTED	20171024017
CL600 2C10 (RJ700)	MAIN LANDING GEAR SELECTOR VALVE ASSEMBLY	2322H000	NOT REPORTED	20171027013
CL600 2C10 (RJ700)	NOSE LANDING GEAR HARNESS	525015	FAULTY	20171108015
CL600 2C10 (RJ700)	AIR DATA COMPUTER	8220372436	NOT REPORTED	20171108016

<b>Make/Model</b>	<b>Part Name</b>	<b>Part Number</b>	<b>Part Condition</b>	<b>SDR No.</b>
CL600 2C10 (RJ700)	AIR CONDITIONING SYSTEM CONTROLLER	GG690950265	NOT REPORTED	20171121012
CL600 2C10 (RJ700)	PRESSURE RELIEF SHUT-OFF VALVE	GG6708001	NOT REPORTED	20171218005
CL600 2C10 (RJ700)	WATER LEVEL INDICATOR ASSEMBLY	50033001	LEAKING	20171129007
CL600 2C10 (RJ700)	BUTTSTRAP	SH670325243	CORROSION	20171222007
CL600 2C10 (RJ700)	INTERCOSTALS	SH6703207534	CORROSION	20171002007
CL600 2C10 (RJ700)	FLOOR SILL	SH670321723	CORRODED	20171002006
CL600 2C10 (RJ700)	WINDSHIELD	NP139321	SHATTERED	20171025020
CL600 2D15 (705)	WINDSHIELD	NP13932113	ARCING	20171124012
CL600 2D24 (RJ900)	AIR CYCLE MACHINE	GG67095009	FAULTY	20171012004
CL600 2D24 (RJ900)	CABIN PRESSURE CONTROLLER	GG67098002	FAILED	20171005011
CL600 2D24 (RJ900)	AIR CYCLE MACHINE	GG67095009	NOT REPORTED	20171027014
CL600 2D24 (RJ900)	FLIGHT CONTROL PANEL	8220044	NOT REPORTED	20171221008
CL600 2D24 (RJ900)	LAVATORY SMOKE DETECTOR	4462534	FAULTY	20171205010
CL600 2D24 (RJ900)	ELECTRIC MOTOR DRIVE PUMP	6619501	WEAK	20171122006
CL600 2D24 (RJ900)	COWL ANTI-ICE VALVE OUTLET DUCT	9912190103	LEAK	20171219004
CL600 2D24 (RJ900)	ANGLE OF ATTACK SENSOR	C16258AB	NOT REPORTED	20171030015
CL600 2D24 (RJ900)	HEATER WINDOW CONTROLLER	165911	FAILED	20171221005
CL600 2D24 (RJ900)	MAIN LANDING GEAR SELECTOR VALVE	2322H000	2322H000	20171024020
CL600 2D24 (RJ900)	NOSE LANDING GEAR SELECTOR VALVE	555406	FAILED	20171120009
CL600 2D24 (RJ900)	SELECTOR VALVE	2322H000	NOT REPORTED	20171207010
CL600 2D24 (RJ900)	STEERING CONTROL MODULE	530005	FAILED	20171010006
CL600 2D24 (RJ900)	INNER SKIN	CC670386011	CORROSION	20171127012
CL600 2D24 (RJ900)	PASSENGER DOOR	CC670386011SN152	CRACKS	20171121011
CL600 2D24 (RJ900)	SPRING LOADED SENSOR ASSEMBLY	SH670505505	FAULTY	20171024033
CL600 2D24 (RJ900)	SIDE POST	CC67033055	CRACKED	20171103019
CL600 2D24 (RJ900)	STRINGER	SH670312122SH670	CORRODED	20171024021

<b>Make/Model</b>	<b>Part Name</b>	<b>Part Number</b>	<b>Part Condition</b>	<b>SDR No.</b>
CL600 2D24 (RJ900)	FLOOR BEAM	MM67035301MM6703	CORROSION	20171013012
CL600 2D24 (RJ900)	BRACKET MACHINED	SH670333902	CORRODED	20171013014
CL600 2D24 (RJ900)	FUSELAGE SKIN	SH6703115113	CORROSION	20171027016
CL600 2D24 (RJ900)	SKIN LOWER PANEL	SH690313519	CHAFING	20171024015
CL600 2D24 (RJ900)	FIXED LEADING EDGE SKIN	CC670123016	CRACKED	20171222006
CL600 2D24 (RJ900)	WING PLANK	CC67010045	CORRODED	20171127011
CL600 2D24 (RJ900)	ISOLATION CONTROL VALVE	TY214811A	FAULTY	20171208005
CL600 2D24 (RJ900)	STARTER CONTROL VALVE	32913393	FAILED	20171005004
CL600 2E25 (RJ1000)	AIR CYCLE MACHINE	3478A010001	SEIZED	20171108014
CL600 2E25 (RJ1000)	ROD END BODY	P3A3212	BROKEN	20171012001
CL600 2E25 (RJ1000)	SURFACE POSITION CONTROL SENSOR	3A2237B	SPLIT MESSAGE	20171114007
BRITTEN NORMAN				
BN2A 21	INNER CABLE	NB47B763	FRAYED	20171120010
BURKHART GROB				
G120A	TENSION SPRING	120A427006	BROKEN	20171019004
CANADAIR				
CL215 6B11 (CL215T)	SPAR WEB	215T10024142	UNSERVICEABLE	20171207017
CL215 6B11 (CL215T)	SPAR CAP	S6638	UNSERVICEABLE	20171207016
CL215 6B11 (CL215T)	SPAR CAP	S6638	UNSERVICEABLE	20171207018
CL600 1A11 (600)	DE-ICE SYSTEM		NOT REPORTED	20171024026
CL600 2B16 (601 3A)	MAIN LANDING GEAR INDICATOR	91111	USED	20171117009
CL600 2B16 (604)	BEAM KEY	50123811	NOT REPORTED	20171030017
CL600 2B16 (604)	OIL LEVEL PROBE	6016390315	FAULTY WELD	20171129015
CL600 2B16 (604)	SWITCH RUDDER TRIM	272690	DEFECTIVE UNIT	20171025015
CL600 2B16 (604)	FLAP CONTROL UNIT	834106	FAILED EXTENDED	20171011019
CL600 2B16 (604)	PRIMARY FLIGHT DISPLAY	HGS2150HGS6605	NOT REPORTED	20171013009



<b>Make/Model</b>	<b>Part Name</b>	<b>Part Number</b>	<b>Part Condition</b>	<b>SDR No.</b>
CL600 2B16 (604)	LEFT-HAND MAIN LANDING GEAR		DID NOT DEPLOY	20171005010
CL600 2B16 (604)	INERTIAL REFERENCE UNIT		NOT REPORTED	20171024030
CL600 2B16 (604)	FLIGHT MANAGEMENT SYSTEM SOFTWARE		IMPROPER OPERATION	20171013010
CL600 2B16 (604)	WINDSCREEN TERMINAL	6043303025	OVERHEAT	20171108006
CL600 2B16 (604)	THROTTLE QUADRANT	FE341000050	NON-CONFORMING	20171003005
CL600 2B19 (RJ100)	TRANSFORMER RECTIFIER	MS179762	DENTED CASE	20171226001
CL600 2B19 (RJ100)	FLAP DRIVE SHAFTS		FROZEN	20171229015
CL600 2B19 (RJ100)	TIRE	DR27921T	DEFLATED	20171129001
CL600 2B19 (RJ100)	LOWER INLET DUCT	15A103101	CRACKED	20171031001
CL600 2B19 (RJ100)	WINDSHIELD	NP13932113	ARCING	20171122015
CESSNA				
150M	HUB ASSEMBLY	D30256	UNSERVICEABLE	20171006011
152	EQUIPMENT		NOT REPORTED	20171207005
152	EQUIPMENT		NOT REPORTED	20171207006
152	EQUIPMENT		NOT REPORTED	20171207007
152	STIFFNER ASSEMBLY	4321691	NOT REPORTED	20171129013
152	PISTON PIN PLUG	LW11625	WORN	20171123010
152	PISTON PIN PLUG	LW11625	WORN	20171123011
152	PISTON PIN PLUG	LW11625	WORN	20171227003
172M	CIRCUIT BREAKER	W23X1AG3	FAILED TO BREAK	20171108010
172N	BREAKER POINTS	382585	FAIR	20171124010
172N	DISCHARGE TUBE		MISSING	20171215016
172N	STARTER		NOT REPORTED	20171124009
172N	MUFFLER	175400125	CRACKED	20171124008
172Q	CABLE	505530405	BROKEN	20171016008

<b>Make/Model</b>	<b>Part Name</b>	<b>Part Number</b>	<b>Part Condition</b>	<b>SDR No.</b>
172S	FLAP MICROSWITCH	V71C17E9201	INTERMITTENT	20171117017
172S	FLAP MICROSWITCH	V71C17E9201	INTERMITTENT	20171117019
180	TAILWHEEL HEAD	3400ABI3412MK	LOOSE	20171115004
182M	FIREWALLS ASSEMBLY	753600200	DAMAGED	20171108011
182T	CONTACTOR	X610007	DEFECTIVE	20171211013
208	END CAP	8A07201002	CRACKED	20171122010
310R	MAIN GEAR IDLER BELLCRANK	8411065	BROKEN	20171011026
337G	MICRO-SWITCH	S20881	BROEKN WIRE	20171023009
525A	3363XL2	300SGL129Q	VIBRATING	20171219014
525A	STARTER GENERATOR	300SGL129Q	VIBRATING	20171219013
550	BEARING	M2040AC2	FAILED	20171207008
560	VALVE REGULATING SHUT OFF	991240216	NOT OPERATING	20171003010
680	SERVICE AIR LINE ASSEMBLY	691404021	BROKEN	20171114003
680	DRIVE SHAFT		SHEARED	20171101007
A185E	STARTER DRIVE		NOT REPORTED	20171211026
A185E	TAILCONE REINFORCEMENT ANGLE	07122071AND2	WORN	20171219015
S550	GROUND LUG	55120218	OLD PART	20171129004
T240	FIREWALL SHUTOFF CABLE	A700BLACK	STIFF	20171116007
U206E	WING SPAR PLATE LEFT-HAND	72140017	CRACKED	20171129011
U206G	CYLINDER BASE NUT	SA652541	CRACKED	20171213005
CIRRUS				
SR20	NOSE LANDING GEAR STRUT	18632003	CRACKED	20171205012
CONVAIR - CAN				
440	MICRO SWITCH	1EN231S	UNSERVICEABLE	20171117016
DEHAVILLAND - CAN				
DHC 2 MKI	NOSE LANDING GEAR BOX END CAP	6A07210001	STRESS CRACKS	20171120020

<b>Make/Model</b>	<b>Part Name</b>	<b>Part Number</b>	<b>Part Condition</b>	<b>SDR No.</b>
DHC 2 MKI	FUEL PUMP	TF9005	NOT REPORTED	20171031009
DHC 3	FORWARD DOOR STEEL POST	C3FS250C3FS249	CORRODED	20171129017
DHC 3	TAIL WHEEL		NOT REPORTED	20171117012
DHC 3	FORWARD ATTACH STRUT	C3UF149	MAJOR MODIFICATION	20171121017
DHC 3	FORWARD DOOR STEEL POST	C3FS250C3FS249	REPAIRED INCORRECTLY	20171129018
DHC 6 200	AUTO FEATHER TORQUE PRESSURE SWITCH	8190026	NOT REPORTED	20171013011
DHC 6 300	ELEVATOR CABLE	TBEO69051	NEW	20171228013
DHC 6 300	ELEVATOR CABLE	TBEO690531	NEW	20171228009
DHC 6 300	ELEVATOR CABLE	TBEO690531	NEW	20171229016
DHC 6 300	ELEVATOR CABLE	TBEO690532	NEW	20171228016
DHC 6 300	ELEVATOR CABLE	TBEO690532	NEW	20171228018
DHC 6 300	ELEVATOR CABLE	TBEO690532	NEW	20171228020
DHC 6 300	ELEVATOR CABLE	TBEO690532	NEW	20171228021
DHC 6 300	ELEVATOR CABLE	TBEO690531	NEW	20171228019
DHC 6 300	ELEVATOR CONTROL CABLE	TBEO690531	NEW	20171229020
DHC 6 300	ELEVATOR CONTROL CABLE	TBEO690531	NEW	20171229023
DHC 6 300	ELEVATOR CONTROL CABLE	TBEO690531	NEW	20171229028
DHC 6 300	ELEVATOR CONTROL CABLE	TBEO690531	NEW	20171229031
DHC 6 300	ELEVATOR CONTROL CABLE	TBEO690531	NEW	20171229034
DHC 6 300	ELEVATOR CONTROL CABLE	TBEO690532	NEW	20171229017
DHC 6 300	ELEVATOR CONTROL CABLE	TBEO690532	NEW	20171229019
DHC 6 300	ELEVATOR CONTROL CABLE	TBEO690532	NEW	20171229022
DHC 6 300	ELEVATOR CONTROL CABLE	TBEO690532	NEW	20171229024
DHC 6 300	ELEVATOR CONTROL CABLE	TBEO690532	NEW	20171229025

<b>Make/Model</b>	<b>Part Name</b>	<b>Part Number</b>	<b>Part Condition</b>	<b>SDR No.</b>
DHC 6 300	ELEVATOR CONTROL CABLE	TBEO690532	NEW	20171229027
DHC 6 300	ELEVATOR CONTROL CABLE	TBEO690532	NEW	20171229029
DHC 6 300	ELEVATOR CONTROL CABLE	TBEO690532	NEW	20171229032
DHC 6 300	ELEVATOR CONTROL CABLE	TBEO690532	NEW	20171229033
DHC 6 300	ELEVATOR CONTROL CABLE	TBEO690532	NEW	20171229035
DHC 6 300	ELEVATOR TRIM CABLE	C6TF14131	USED	20171123013
DHC 6 300	FUEL LINE LEFT-HAND	C6PW10031	CHAFFED	20171218010
DHC 6 300	ROD END	VSC303A	NEW	20171128010
DHC 6 300	RUDDER CABLE	NAS305R344201	NEW	20171228011
DHC 6 300	RUDDER CONTROL CABLE	NAS305R344201	NEW	20171228010
DHC 6 300	RUDDER CONTROL CABLE	NAS305R344201	NEW	20171229021
DHC 6 300	RUDDER CONTROL CABLE	NAS305R344201	NEW	20171229030
DHC 6 300	RUDDER CONTROL CABLE FORWARD	NAS305R344201	USED	20171228008
DHC 6 300	RUDDER CABLE	NAS305R354266	NEW	20171228014
DHC 6 300	RUDDER CABLE	NAS305R354266	NEW	20171228015
DHC 6 300	RUDDER CABLE	NAS305R354266	USED	20171228022
DHC 6 300	RUDDER CONTROL CABLE	NAS305R354266	NEW	20171229018
DHC 6 300	RUDDER CONTROL CABLE	NAS305R354266	NEW	20171229026
DHC 6 300	HYDRAULIC RESERVOIR	C6HF10571	IN SERVICE	20171116012
DHC 6 300	HORIZONTAL STABILIZER	C6TP10017	CRACKED	20171222005
DHC 8 102	ROD	83231027001	BROKEN	20171011013
DHC 8 103	ELEVATOR TRIM SERVO CHAIN	82700523001	BROKEN	20171120016
DHC 8 201	SEAL		LEAKING	20171026011
DHC 8 201	SERVO		FAULTY	20171011010
DHC 8 201	FLIGHT MANAGEMENT SYSTEM		FAULTY	20171024018
DHC 8 301	JUNCTION ASSEMBLY		CRACKED	20171219002

<b>Make/Model</b>	<b>Part Name</b>	<b>Part Number</b>	<b>Part Condition</b>	<b>SDR No.</b>
DHC 8 301	HOUSING ASSEMBLY LEVER	82740029003	CORRODED	20171016006
DHC 8 311	CONTACTOR	AJA4N176	FAILED	20171013015
DHC 8 311	HOSE	DSC252B40124	FAILED	20171024008
DHC 8 311	HOSE		FAILED	20171024009
DHC 8 314	TUBE ASSEMBLY	82920010265	PUNCTURE	20171128012
DHC 8 314	HOSE ASSEMBLY	DSC4131	LEAKING	20171026007
DHC 8 400	EQUIPMENT		NOT REPORTED	20171101002
DHC 8 400	TURBINE SHUTOFF VALVE	8209251	FAULTY	20171102001
DHC 8 400	AIR CYCLE MACHINE		FAILED	20171129006
DHC 8 400	OUTFLOW VALVE		FAULTY	20171120011
DHC 8 400	CABIN PRESSURE CONTROLLER	92146A010401	FAULTY	20171103017
DHC 8 400	PACK FLOW CONTROL VALVE		PIN PUSHED IN	20171101001
DHC 8 400	PACK FLOW CONTROL VALVE	8209026	UNSERVICEABLE	20171101010
DHC 8 400	ALTERNATING CURRENT GENERATOR	11522186	FAILED	20171025022
DHC 8 400	ADVANCE PNEUMATIC DETECTOR	DH1338MSC	FAULTY	20171208006
DHC 8 400	AILERON CABLE	82742408001	BROKEN	20171116001
DHC 8 400	RUDDER PEDAL AND BRAKE PUSHROD		BOLT LOOSE	20171023008
DHC 8 400	CANISTER		COATING	20171016010
DHC 8 400	GROMMET	MS3548915	EXTRUDED	20171010003
DHC 8 400	REFUEL/DEFUEL PANEL		DAMAGED	20171215017
DHC 8 400	O-RING		FAILED	20171218001
DHC 8 400	TIMER	4100S01807	FAULTY	20171201008
DHC 8 400	NOSE LANDING GEAR	47200	STUCK	20171110010
DHC 8 400	HYDRAULIC LINE		DAMAGED	20171010014
DHC 8 400	NOSE LANDING GEAR DOOR SENSOR		BROKEN	20171220004
DHC 8 400	NOSE LANDING GEAR GROUND LOCK		FROZEN	20171211023

<b>Make/Model</b>	<b>Part Name</b>	<b>Part Number</b>	<b>Part Condition</b>	<b>SDR No.</b>
DHC 8 400	NOSE LANDING GEAR UNLOCK ACTUATOR	47400	FAILED	20171117018
DHC 8 400	SENSOR		CLEANED	20171128003
DHC 8 400	SEQUENCE VALVE		FAULTY	20171201007
DHC 8 400	UPLOCK		SPRING	20171127016
DHC 8 400	ACTUATOR		BYPASSING	20171106003
DHC 8 400	NOSE LANDING GEAR DOOR ACTUATOR		FAULTY	20171117021
DHC 8 400	SELECTOR VALVE	483003	FAULTY	20171017004
DHC 8 400	#2 MAIN WHEEL		BEARING FAILURE	20171117020
DHC 8 400	MAIN WHEEL BEARING	315731	FAILED	20171025014
DHC 8 400	ROTARY VARIABLE DIFFERENTIAL TRANSDUCER		NOT CENTERED	20171201005
DHC 8 400	STEERING CONTROL UNIT		FAULTY	20171211024
DHC 8 400	ADVISORY CONRTOL UNIT		FAULTY	20171023007
DHC 8 400	MAIN LANDING GEAR HARNESS		FAULTY	20171116010
DHC 8 400	NOSE LANDING GEAR DOOR SENSOR	82410453001	FAULTY	20171220005
DHC 8 400	SENSOR		ADJUSTED	20171109011
DHC 8 400	CHECK VALVE		CLOGGED	20171013004
DHC 8 400	DOOR WARNING		NOT REPORTED	20171012014
DHC 8 400	DOOR WARNING		NOT REPORTED	20171012015
DHC 8 400	DOOR WARNING		NOT REPORTED	20171013002
DHC 8 400	DOOR WIRING		NOT REPORTED	20171013005
DHC 8 400	WINDSHIELD		CRACKED	20171129012
DHC 8 400	WING SKIN ACCESS PANEL	85714220101	CRACKED	20171027018
DHC 8 400	INBOARD FLAP UPPER AND LOWER SKINS	8575079085750800	CORRODED	20171201004
DHC 8 400	PROPELLER ELECTRONIC CONTROL	699018003	FAILED	20171027012
DHC 8 400	LEFT HAND FORWARD ACCESS DOOR	87144003005	SCRAP	20171218003

<b>Make/Model</b>	<b>Part Name</b>	<b>Part Number</b>	<b>Part Condition</b>	<b>SDR No.</b>
DHC 8 400	OIL COOLER		CRACKED	20171211017
DHC 8 402	FLOW CONTROL SHUT-OFF VALVE	8209026	FAILED	20171102008
DHC 8 402	FLOW CONTROL & SHUT-OFF VALVE	8209026	FAULTY	20171124014
DHC 8 402	ENVIRONMENTAL CONTROL UNIT	8201008722387220	FAILED INTERNALLY	20171215012
DHC 8 402	PNEUMATIC FLOW CONTROL SHUT-OFF VALVE		FAULTY	20171026008
DHC 8 402	CONTACTOR	227CC02AY00	FAILED	20171212006
DHC 8 402	TRANSFORMER RECTIFIER UNIT		SHORTED	20171114002
DHC 8 402	ALTERNATING CURRENT GENERATOR	11522186	FAILED	20171031003
DHC 8 402	GENERATOR		FAULTY	20171121006
DHC 8 402	TRACK FITTING	CDSP1904503	CRACKED	20171123003
DHC 8 402	PEDAL ADJUSTMENT SHAFT	82710042105	BACKING OFF	20171206005
DHC 8 402	RUDDER PUSH OFF SWITCH		FAULTY	20171227005
DHC 8 402	CONNECTOR	D3899926FB35SC	OPEN GROUND	20171215013
DHC 8 402	POWER CONTROL UNIT FITTING	85417347001	CRACKED	20171013003
DHC 8 402	POWER CONTROL UNIT FITTING	85417347001	CRACKED	20171013006
DHC 8 402	POWER CONTROL UNIT FITTING	85417347001	CRACKED	20171013007
DHC 8 402	OVAL VENT TUBE	8Z7881	FOULING	20171213002
DHC 8 402	ENGINE DRIVEN PUMP		FAILED	20171019010
DHC 8 402	HYDRAULIC PUMP	6617304	FAILED	20171004002
DHC 8 402	LEADING EDGE DE-ICE BOOT	P29S4D52770	TORN	20171107001
DHC 8 402	DE-ICE WIRE HARNESS	697037220	FAILING	20171103024
DHC 8 402	ACTUATOR		FAILED	20171220003
DHC 8 402	AXLE SADDLE	461351	DAMAGED	20171211010
DHC 8 402	SOLENOID SEQUENCE VALVE	483025	SUSPECT	20171011018
DHC 8 402	SOLENOID SEQUENCE VALVE	483025	FAILED	20171113004

<b>Make/Model</b>	<b>Part Name</b>	<b>Part Number</b>	<b>Part Condition</b>	<b>SDR No.</b>
DHC 8 402	SOLENOID SEQUENCE VALVE	483025	WOULD NOT CYCLE	20171106002
DHC 8 402	ACTUATOR ASSEMBLY DOOR	478301	FAILED	20171122001
DHC 8 402	ACTUATOR ASSEMBLY DOOR	478301	FAILED	20171020001
DHC 8 402	ROTARY VARIABLE DIFFERENTIAL TRANSDUCER	301450601	RIGGING	20171010017
DHC 8 402	GROUNDING WIRE	36153	BROKEN WIRE	20171109001
DHC 8 402	DUCT LEAK OVER TEMPERATURE SWITCH	8209083	INTERNAL FAILURE	20171023012
DHC 8 402	DUCT LEAK OVER TEMPERATURE SWITCH	8209083	INTERNAL FAILURE	20171215019
DHC 8 402	DOOR SEAL CONTROL VALVE	4100S03101	STUCK	20171122014
DHC 8 402	DOOR SEAL CONTROL VALVE	4100S03101	STUCK OPEN	20171005002
DHC 8 402	DOOR SEAL CONTROL VALVE	4100S03101	STUCK OPEN	20171018001
DHC 8 402	PROXIMITY SENSOR	401020201	INTERMITTENT	20171005007
DHC 8 402	WINDSHIELD	NP15790119	CRACKED	20171019003
DHC 8 402	WINDSHIELD	NP15790122	CRACKED	20171026005
DHC 8 402	WINDSHIELD RIGHT-HAND	NP15790120	CRACKED	20171217002
DHC 8 402	BARREL NUT	DSC22818	CRACKED	20171005008
DHC 8 402	SWITCH'S LEVER	JM5	UNSERVICEABLE	20171103023
DHC 8 402	AFT JET PIPE ASSEMBLY	87804005009	DAMAGED	20171010009
DIAMOND - CAN				
DA 20 C1	ALTERNATOR BRACKET	2224121400	BROKEN IN HALF	20171220012
DORNIER				
328 300	THERMOSTAT FILTER	2072Q010	CLOGGED	20171023010
DOUGLAS				
DC10 30F	SPOILER ACTUATOR	2680215M5	NOT REPORTED	20171218011
DC3C	OUT BOARD ELEVATOR HINGE	31151841	CRACKED	20171127017
EMBRAER				



<b>Make/Model</b>	<b>Part Name</b>	<b>Part Number</b>	<b>Part Condition</b>	<b>SDR No.</b>
ERJ 170 200 SU	RING RETAINER	E2213739	NOT REPORTED	20171120013
ERJ 170 200 SU	EXTERNAL POWER MODULE	1701337D	UNSERVICEABLE	20171012012
ERJ 170 200 SU	EXTERNAL POWER MODULE	1701337D	UNSERVICEABLE	20171113002
ERJ 170 200 SU	FLAP ACTUATOR	C1575161	NOT REPORTED	20171228012
ERJ 170 200 SU	RING RETAINER	E2213739	NOT REPORTED	20171220001
ERJ 190 100 IGW	AIR CYCLE MACHINE	10007005	FAILED	20171006001
ERJ 190 100 IGW	SLAT ACTUATOR TYPE ACTUATOR	1703911	FAILED	20171211003
EUROCOPTER FRANCE				
EC 120 B	COUPLING	EC12030221	WORN	20171103022
EC 120 B	PIN THREADED	22731BC080042M	CRACKED	20171123009
FAIRCHILD				
SA227CC	1ST TURBINE WHEEL	31081642	FRACTURED	20171110009
SA227DC	FIRE WARNING LOGIC CONTROL BOX	3219027001	INTERMITTENT	20171121008
SA227DC	ELEVATOR STICK PUSH CABLE	2770001019	SERVICEABLE	20171207014
SA227DC	CIRCUIT BREAKER LIGHTED PANEL	2719115181	CORRODED	20171031005
GRUMMAN - USA				
G 21A	TAPPET ASSEMBLY	45943	SHEARED	20171228017
GULFSTREAM - ISRAEL				
GULFSTREAM 100	CONTROL ASSEMBLY-FLEXIBLE	7431933	JAMMED	20171003014
LEARJET				
45	SINGLE POINT PRESSURE REFUELING		NOT REPORTED	20171127014
45	HOSE ASSEMBLY FLEX RIGHT-HAND	244224152	UNSERVICEABLE	20171215020
45	SENSOR OVERHEAT	66001413	UNSERVICEABLE	20171101008
MITSUBISHI - USA				
MU 2B60	CLIP	010A398793	CRUSHED	20171211018
MOONEY				

<b>Make/Model</b>	<b>Part Name</b>	<b>Part Number</b>	<b>Part Condition</b>	<b>SDR No.</b>
M20J	FUSELAGE TUBE FRAME		CORRODED	20171004010
PILATUS - SW				
PC12 45	SPRING STRUT ATTACHMENT	9380914304	NOT REPORTED	20171228001
PC12 47	ADAPTER	9599021231	HOSE BURST	20171023016
PC12 47	CONNECTOR PLUG	9717510230	BROKEN WIRE	20171212007
PC12 47E	AUTOPILOT SERVO	65001900101	REPAIRED	20171004003
PC12 47E	RESTRAINT SYSTEM ASSEMBLY	4095010112396	MALFUNCTION	20171108012
PC12 47E	LIFT DOOR ACTUATOR	EM41592	CRACKED	20171115006
PC12 47E	FLAP ACTUATOR	9787320309	HIGH RESISTANCE	20171129016
PC12 47E	ADVANCED GRAPHIC MODULE CARD	70364101904	NEW	20171219006
PIPER				
PA28R 200	IGNITION SWITCH		NOT REPORTED	20171109013
PA30	D-SUB FEMALE 15 POSITION CONNECTOR	11600014001	NEW	20171017005
PA31 350	MAIN LANDING GEAR UPLOCK BRACKET ANGLE ASSEMBLY	40625000	CRACKED	20171223002
PA31 350	HOSE	8004804	NOT REPORTED	20171025024
PA31 350	SOLENOID ASSEMBLY	487155	BENT	20171108018
PA31 350	CYLINDER BASE STUD	76220	BROKEN	20171121015
PA44 180	HYDRAULIC PUMP	38992012	NOT REPORTED	20171201010
PA44 180	CARBURETOR HEAT SHROUD	8743602	BROKEN	20171201006
PA44 180	CARBURETOR HEAT SHROUD ASSEMBLY	8743602	BROKEN	20171117022
ROCKWELL COLLINS				
690A	FRAME	34002443	CRACKED	20171220007
SIKORSKY				
S76B	HYDRAULIC PUMP	7665009808102	SHEARED	20171101011
S92A	MAIN ROTOR BLADE	9215009000042	SHIM PROTRUDES	20171213009

<b>Make/Model</b>	<b>Part Name</b>	<b>Part Number</b>	<b>Part Condition</b>	<b>SDR No.</b>
S92A	SWASHPLATE ASSEMBLY	9210415000043	UNSERVICEABLE	20171115007
VIKING CANADA				
CL215 6B11 (CL415)	BOOT	215927164	NEW	20171123008
CL215 6B11 (CL415)	EMERGENCY WATER DROP CABLE	2159470232	FRAYED	20171121009
CL215 6B11 (CL415)	FINLET SKINS	215T212001617181	CRACKS	20171010011
DHC 6 400	SPROCKET	C3CF5363	NEW	20171011024
DHC 6 400	CLIP	MS295231	NOT REPORTED	20171102006
DHC 6 400	FUEL PRESSURE SWITCH	P18MH109	NEW	20171122016
DHC 6 400	FUEL PRESSURE SWITCH	P18MH109	NEW	20171123007
DHC 6 400	FUEL PRESSURE SWITCH	P18MH109	NEW	20171127015
DHC 6 400	FUEL PRESSURE SWITCH	P18MH109	NOT REPORTED	20171110012
DHC 6 400	HYDRAULIC PRESSURE FAILURE	P12MH149	NEW	20171206007
DHC 6 400	HYDRAULIC PRESSURE SWITCH	P12MH149	NEW	20171228003
DHC 6 400	HYDRAULIC PRESSURE SWITCH	P12MH149	NEW	20171228005
DHC 6 400	HYDRAULIC PRESSURE SWITCH	P12MH149	NEW	20171228006
DHC 6 400	HYDRAULIC PRESSURE SWITCH	P12MH149	NEW	20171228007
DHC 6 400	HYDRAULIC PRESSURE SWITCH	P12MH149	NOT REPORTED	20171228004
DHC 6 400	HYDRAULIC PRESSURE SWITCH	P12MH149	NOT REPORTED	20171123012
DHC 6 400	MEMBER	C6FS128749	USED	20171023014
DHC 6 400	MEMBER	C6FS128749	USED	20171023015
DHC 6 400	TORQUE PRESSURE SWITCH	C6SC1125	NEW	20171206010
DHC 6 400	TORQUE PRESSURE SWITCH	C6SC1125	NOT REPORTED	20171206011
DHC 6 400	ICE DOOR PNEUMATIC LINE	9935316108	LEAKING	20171108013
ENGINE				
ALLISON				
250-C20	CASE HALVES	23057142	OVERHAULED	20171102007

<b>Make/Model</b>	<b>Part Name</b>	<b>Part Number</b>	<b>Part Condition</b>	<b>SDR No.</b>
250-C20	OUTER COMBUSTION CASE	6870992	CRACKED	20171026010
250-C20	ENGINE GOVERNOR	23065123	TORQUE SURGING	20171219007
250-C20B	3RD STAGE WHEEL	23065818	UNSERVICEABLE	20171219016
250-C20B	FUEL CONTROL UNIT	23070606	FAULTY	20171002013
250-C20F	SEAL	23079072	FAILURE	20171023011
250-C47B	COMPRESSOR		MAKING METAL	20171106004
501-D13	GEAR/SHAFT	68543986856848	STRIPPED	20171112002
<b>AVCO LYCOMING</b>				
AEIO-360-A1B6	IMPULSE COUPLING	M3100	LOOSE	20171002004
AEIO-360-A1B6	IMPULSE COUPLING	M3100	WORN	20171206006
AEIO-360-A1B6	PUSH ROD		WORN	20171004005
IO-360-C1C	INNER VALVE SPRING	LW11797	BROKEN	20171027020
IO-540-K1B5	MAGNETO GEAR RETAINER ASSEMBLY	LW19096	SHEARED	20171229036
LTIO-540-J2BD	TURBOCHARGER	4091709001	OVERHAUL	20171003003
LTS-101-750B-1	ENGINE ASSEMBLY		MAKING METAL	20171003007
O-320-D2J	CYLINDER/PISTON	LW12461	OVERTEMPERATURE	20171206009
O-320-E2D	CARBURETOR	MA45PA	ERRATIC	20171109012
O-360-A4K	CYLINDER	LW12427	CRACKED	20171016011
O-360-A4K	CYLINDER	LW12427	CRACKED	20171017010
O-360-A4M	PISTON PIN PLUG		WORN	20171221009
O-360-J2A	ALTERNATOR SHAFT	ALY8520LS	SHEARED	20171109008
TIO-540-A2C	DISTRIBUTOR BLOCK	10391586	LOOSE	20171017011
TIO-540-AJ1A	HEAD		DAMAGED	20171024036
TIO-540-J2BD	V BAND FLANGE		SEPARATED	20171103018
<b>GARRETT</b>				
TPE331-10T-516K	ENGINE CONTROL	39423091	NOT REPORTED	20171101004

<b>Make/Model</b>	<b>Part Name</b>	<b>Part Number</b>	<b>Part Condition</b>	<b>SDR No.</b>
TPE331-10UA	TUBE ASSEMBLY	31021281	IN SERVICE	20171122009
TPE331-10UA-511G	REAR SEAL	8964943	NEW	20171129014
TPE331-11U-612G	BLADE	31081251	USED	20171121005
<b>GENERAL ELECTRIC</b>				
CF34-3A	#3 BEARING CARBON SEAL		NOT REPORTED	20171123002
CF34-3A1	OIL SYSTEM		NOT REPORTED	20171012007
CF34-3B1	MAIN FUEL CONTROL UNIT	4147T70P02	NOT REPORTED	20171219003
CF34-3B1	CHECK VALVE 10TH STAGE	624907B	FRACTURED	20171113001
CF34-8C5	FULL AUTHORITY DIGITAL ENGINE CONTROL	4120T00P57	FAILED	20171109007
CF6-80C2B6	KEY-STAGE 1	9319M24G03	INVERTED	20171106005
CF6-80C2B6	TURBINE		NOT REPORTED	20171101005
CF6-80C2B6F	ENGINE		NOT REPORTED	20171208003
CT7-8A	ENGINE	CT78A	LOW OIL PRESSURE	20171220010
<b>HONEYWELL</b>				
AS907-1-1A	INLET GUIDE VANE ARM	30330502	MISSING BUSHINGS	20171211025
AS907-1-1A	INLET GUIDE VANE ARM	30330502	MISSING BUSHINGS	20171206008
AS907-2-1A	ENGINE		NOT REPORTED	20171121014
AS907-2-1A	ENGINE		NOT REPORTED	20171122003
AS907-2-1A	OIL SYSTEM		NOT REPORTED	20171023013
AS907-2-1A	OIL PUMP	30387043	LOW PRESSURE	20171016007
HTS-900-2-1D	FRANGIBLE LINK POWER TURBINE SENSOR	430154903	CRACKED	20171102005
<b>PRATT &amp; WHITNEY-CAN</b>				
JT15D-1A	ENGINE		NOT REPORTED	20171130008
JT15D-5	ENGINE		NOT REPORTED	20171006004
JT15D-5	ENGINE		NOT REPORTED	20171027004

<b>Make/Model</b>	<b>Part Name</b>	<b>Part Number</b>	<b>Part Condition</b>	<b>SDR No.</b>
JT15D-5D	LOW COMPRESSOR BOOST ROTOR	307023201	UNSERVICEABLE	20171124013
PT6A-114A	ENGINE		NOT REPORTED	20171030002
PT6A-114A	ENGINE		NOT REPORTED	20171103001
PT6A-114A	ENGINE		NOT REPORTED	20171103016
PT6A-114A	OIL SYSTEM		NOT REPORTED	20171130010
PT6A-114A	FUEL CONTROL UNIT	32448974	UNSERVICEABLE	20171017015
PT6A-11AG	EQUIPMENT		NOT REPORTED	20171229006
PT6A-135	ENGINE		NOT REPORTED	20171030007
PT6A-135A	ENGINE		NOT REPORTED	20171127006
PT6A-140	EQUIPMENT		NOT REPORTED	20171229008
PT6A-25C	ENGINE		NOT REPORTED	20171009004
PT6A-25C	ENGINE		NOT REPORTED	20171124006
PT6A-27	ENGINE		NOT REPORTED	20171025007
PT6A-28	ENGINE		NOT REPORTED	20171009002
PT6A-28	OIL PRESSURE		NOT REPORTED	20171103005
PT6A-34	LARGE EXIT DUCT	310926302	CRACKED	20171219010
PT6A-34	LARGE EXIT DUCT	310926302	NOT REPORTED	20171025017
PT6A-34	TURBINE		NOT REPORTED	20171025002
PT6A-35	EQUIPMENT		NOT REPORTED	20171229010
PT6A-41	COMPRESSOR DISK -2ND & 3RD STAGE		NOT REPORTED	20171213006
PT6A-42	EQUIPMENT		NOT REPORTED	20171229003
PT6A-42	AUTO FEATHER SWITCH		NOT REPORTED	20171117006
PT6A-42	ENGINE		NOT REPORTED	20171009001
PT6A-42	ENGINE		NOT REPORTED	20171026004
PT6A-42	ENGINE		NOT REPORTED	20171026006
PT6A-42	ENGINE		NOT REPORTED	20171030001

<b>Make/Model</b>	<b>Part Name</b>	<b>Part Number</b>	<b>Part Condition</b>	<b>SDR No.</b>
PT6A-42	ENGINE		NOT REPORTED	20171127001
PT6A-42A	ENGINE		NOT REPORTED	20171024006
PT6A-52	EQUIPMENT		NOT REPORTED	20171215008
PT6A-60A	TACHOMETER GENERATOR	503890571	DAMAGED	20171002008
PT6A-60A	ENGINE		NOT REPORTED	20171011004
PT6A-60A	ENGINE		NOT REPORTED	20171011007
PT6A-60A	OIL SYSTEM		NOT REPORTED	20171027003
PT6A-60A	ENGINE TEMPERATURE INDICATOR		NOT REPORTED	20171027007
PT6A-62	ENGINE		NOT REPORTED	20171110004
PT6A-65AG	ENGINE		NOT REPORTED	20171024004
PT6A-65B	OIL SYSTEM		NOT REPORTED	20171006003
PT6A-67P	ENGINE		NOT REPORTED	20171206002
PT6A-67P	ENGINE		NOT REPORTED	20171120001
PT6A-68	OIL PRESSURE		NOT REPORTED	20171006005
PT6B-37A	ENGINE		NOT REPORTED	20171026001
PT6T-3B	SERVICING		NOT REPORTED	20171117007
PT6T-3B	SUPPORT	3016988	HOLE	20171011025
PW119B	IMPELLER CENTRIFUGAL HIGH PRESSURE COMPRESSOR	3037547	UNSERVICEABLE	20171107003
PW120A	ENGINE		NOT REPORTED	20171120004
PW120A	FUEL CONTROL		NOT REPORTED	20171026013
PW120A	OIL PRESSURE		NOT REPORTED	20171030003
PW121	ENGINE		NOT REPORTED	20171011001
PW121	ENGINE		NOT REPORTED	20171011003
PW121	FIRST STAGE POWER TURBINE BLADE	310090301	FRACTURED	20171101006
PW121	OIL SYSTEM		NOT REPORTED	20171025006

<b>Make/Model</b>	<b>Part Name</b>	<b>Part Number</b>	<b>Part Condition</b>	<b>SDR No.</b>
PW123	ENGINE		NOT REPORTED	20171009007
PW123	EQUIPMENT		NOT REPORTED	20171215003
PW123AF	PACKING	3032490	NOT REPORTED	20171130011
PW123B	PROPELLER CONTROLS		NOT REPORTED	20171027006
PW123B	PROPELLER FEATHERING		NOT REPORTED	20171023003
PW123C	ENGINE		NOT REPORTED	20171011009
PW123C	ENGINE		NOT REPORTED	20171130009
PW123D	OIL SYSTEM		NOT REPORTED	20171117004
PW123E	OIL SYSTEM		NOT REPORTED	20171124002
PW123E	OIL SYSTEM		NOT REPORTED	20171103015
PW123E	P3 TUBE		NOT REPORTED	20171011006
PW123E	OIL PRESSURE		NOT REPORTED	20171103004
PW127E	ENGINE		NOT REPORTED	20171117003
PW127E	OIL SYSTEM		NOT REPORTED	20171130006
PW127F	OIL SYSTEM		NOT REPORTED	20171124003
PW127G	ENGINE ELECTRONIC CONTROL		NOT REPORTED	20171215001
PW127H	ENGINE		NOT REPORTED	20171024001
PW127M	EQUIPMENT		NOT REPORTED	20171229004
PW127M	EQUIPMENT		NOT REPORTED	20171229009
PW127M	ENGINE		NOT REPORTED	20171025003
PW127M	ENGINE		NOT REPORTED	20171103009
PW127M	ENGINE		NOT REPORTED	20171110001
PW127M	ENGINE		NOT REPORTED	20171110003
PW127M	EQUIPMENT		NOT REPORTED	20171215004
PW127M	EQUIPMENT		NOT REPORTED	20171215006
PW127M	OIL SYSTEM		NOT REPORTED	20171124004



<b>Make/Model</b>	<b>Part Name</b>	<b>Part Number</b>	<b>Part Condition</b>	<b>SDR No.</b>
PW127M	OIL PRESSURE		NOT REPORTED	20171026003
PW1500G	HARNESS ASSEMBLY	10233851	INTERMITTENT FAILURE	20171201002
PW1500G	ENGINE		NOT REPORTED	20171218006
PW1500G	ENGINE ASSEMBLY	PW1524G	FAILED	20171206003
PW1500G	ENGINE ASSEMBLY	PW1524G3	FAILED	20171221001
PW1500G	ENGINE COMBUSTION SECTION		NOT REPORTED	20171030012
PW1500G	ENGINE	PW1524G	NOT REPORTED	20171116003
PW1500G	ENGINE ASSEMBLY	PW1521G3	FAILED	20171212002
PW1500G	OIL SYSTEM		NOT REPORTED	20171002001
PW1500G	OIL SYSTEM		NOT REPORTED	20171005006
PW1500G	OIL SYSTEM		NOT REPORTED	20171010001
PW1500G	ENGINE ASSEMBLY	PW1524G	LOSS OF POWER	20171204001
PW1500G	OIL PRESSURE SENSOR	1018277	INTERMITTENT FAILURE	20171130014
PW150A	EQUIPMENT		NOT REPORTED	20171130007
PW150A	29 BEARING		CHIPS DETECTED	20171130020
PW150A	ENGINE		NOT REPORTED	20171009006
PW150A	ENGINE		NOT REPORTED	20171024003
PW150A	ENGINE		NOT REPORTED	20171025004
PW150A	ENGINE		NOT REPORTED	20171027005
PW150A	ENGINE		NOT REPORTED	20171103003
PW150A	ENGINE		NOT REPORTED	20171117001
PW150A	EQUIPMENT		NOT REPORTED	20171215009
PW150A	NUMBER 4 BEARING		FAILED	20171211019
PW150A	ENGINE	PW150A	CHIPS DETECTED	20171220002
PW150A	OIL SYSTEM		NOT REPORTED	20171215007
PW150A	OIL SYSTEM		NOT REPORTED	20171009005

<b>Make/Model</b>	<b>Part Name</b>	<b>Part Number</b>	<b>Part Condition</b>	<b>SDR No.</b>
PW150A	OIL SYSTEM		NOT REPORTED	20171011002
PW150A	OIL SYSTEM		NOT REPORTED	20171024031
PW150A	OIL SYSTEM		NOT REPORTED	20171025012
PW150A	OIL SYSTEM		NOT REPORTED	20171027008
PW150A	OIL SYSTEM		NOT REPORTED	20171027009
PW150A	OIL SYSTEM		NOT REPORTED	20171103008
PW150A	OIL SYSTEM		NOT REPORTED	20171207009
PW150A	OIL SYSTEM		NOT REPORTED	20171211020
PW150A	P 2 7 CHECK VALVE	54010375	INTERNAL DAMAGE	20171006006
PW150A	ENGINE OIL IND		NOT REPORTED	20171025009
PW150A	ENGINE OIL IND		NOT REPORTED	20171025011
PW150A	OIL TEMPERATURE SENSOR	304814803	FAILED	20171012006
PW150A	OIL PRESSURE		NOT REPORTED	20171206001
PW150A	OIL PRESSURE		NOT REPORTED	20171103007
PW150A	OIL TEMPERATURE		NOT REPORTED	20171011022
PW150A	OIL TEMPERATURE		NOT REPORTED	20171030004
PW150A	OIL TEMPERATURE SENSOR	304814802	FAILED	20171016003
PW206B2	EQUIPMENT		NOT REPORTED	20171229007
PW206C	FUEL DIVIDER		NOT REPORTED	20171025010
PW207C	ENGINE		NOT REPORTED	20171103002
PW305A	ENGINE		NOT REPORTED	20171030006
PW305A	ENGINE		NOT REPORTED	20171110005
PW305A	ENGINE		NOT REPORTED	20171117002
PW305A	ENGINE		NOT REPORTED	20171124005
PW306A	EQUIPMENT		NOT REPORTED	20171229005
PW306A	ENGINE		NOT REPORTED	20171130003

<b>Make/Model</b>	<b>Part Name</b>	<b>Part Number</b>	<b>Part Condition</b>	<b>SDR No.</b>
PW306B	ENGINE		NOT REPORTED	20171110006
PW306C	ENGINE		NOT REPORTED	20171006002
PW306C	ENGINE		NOT REPORTED	20171024007
PW306C	ENGINE		NOT REPORTED	20171130001
PW306C	OIL SEALS MULTIPLE		NOT REPORTED	20171127005
PW306D	ENGINE		NOT REPORTED	20171025005
PW306D	POWER TURBINE HOUSINGS	30B728401	NOT REPORTED	20171205001
PW308A	ENGINE		NOT REPORTED	20171127004
PW308C	ENGINE		NOT REPORTED	20171024002
PW308C	ECOLOGY TANK		NOT REPORTED	20171120002
PW308C	OIL PRESSURE		NOT REPORTED	20171027011
PW535E	EQUIPMENT		NOT REPORTED	20171229012
PW535E	ENGINE		NOT REPORTED	20171026002
PW545A	ALTERNATOR SEAL		NOT REPORTED	20171229001
PW545A	OIL PRESSURE		NOT REPORTED	20171030005
PW545B	EQUIPMENT		NOT REPORTED	20171229002
PW545B	EQUIPMENT		NOT REPORTED	20171229011
PW545B	ENGINE		NOT REPORTED	20171025001
PW545B	THRUST REVERSER SWITCH		NOT REPORTED	20171124001
PW545B	OIL PRESSURE		NOT REPORTED	20171025013
PW545B	OIL PRESSURE		NOT REPORTED	20171103006
PW545B	OIL PRESSURE		NOT REPORTED	20171110002
PW545C	OIL SYSTEM		NOT REPORTED	20171009003
PW615FA	STARTER GENERARTOR		NOT REPORTED	20171130004
PW615FA	ENGINE		NOT REPORTED	20171027001
PW615FA	ENGINE		NOT REPORTED	20171027002

<b>Make/Model</b>	<b>Part Name</b>	<b>Part Number</b>	<b>Part Condition</b>	<b>SDR No.</b>
PW615FA	OIL SYSTEM		NOT REPORTED	20171103013
PW615FA	OIL SYSTEM		NOT REPORTED	20171215005
PW615FA	OIL SYSTEM		NOT REPORTED	20171024005
PW901A	AUXILIARY POWER UNIT		NOT REPORTED	20171025008
PW901A	AUXILIARY POWER UNIT STARTER GENERATOR		NOT REPORTED	20171215002
PW901A	AUXILIARY POWER UNIT EXHAUST		NOT REPORTED	20171117005
<b>PRATT &amp; WHITNEY-USA</b>				
PW1521G	POWERPLANT		NOT REPORTED	20171023002
PW1521G	FUEL FILTER BOWL		NOT REPORTED	20171010004
PW1524G	OIL SYSTEM		NOT REPORTED	201711107005
PW1524G	FUEL DISTRIBUTION		NOT REPORTED	20171010013
PW1524G	FUEL DISTRIBUTION		NOT REPORTED	20171011015
PW1524G	FUEL DISTRIBUTION		NOT REPORTED	20171011016
PW1524G	FUEL DISTRIBUTION		NOT REPORTED	20171011017
PW1524G	FUEL DISTRIBUTION		NOT REPORTED	20171011020
R-985-AN-14B	MASTER ROD THRUST BEARING		FAILURE	20171013016
R-985-AN-14B	CYLINDER	399353CA1	CRACKED	20171010002
<b>ROLLS ROYCE - GY</b>				
BR700-715A1-30	RETAINING RING	BRH19797	CRACKED	20171013017
<b>TELEDYNE CONTINENTAL</b>				
IO-240-B	FUEL PUMP	6533514A5	LEAKING	20171121003
IO-240-B	FUEL PUMP	6533514A5	LEAKING	20171124011
IO-550-F	DISTRIBUTOR GEAR		UNSERVICEABLE	20171023017
LTSIO-360-EB1	DISTRIBUTOR GEAR	10357586	STRIPPED	20171204005
O-200-A	CYLINDER	SA10200	CRACKED	20171003012

<b>Make/Model</b>	<b>Part Name</b>	<b>Part Number</b>	<b>Part Condition</b>	<b>SDR No.</b>
TURBOMECA				
ARRIEL 1D1	COMPRESSOR		SCRAPING SOUND	20171122011
ARRIEL 2B	LINE P3 FITTING LABYRINTH	292687310	FRETTING	20171101003
ARRIEL 2B1	BLADES	229226A0B0	WORN TIPS	20171110011
WILLIAMS				
FJ44-3A	OIL PRESSURE TRANSDUCER	APTE304A200G	FAILED	20171219012
PROPELLER				
DOWTY ROTOL				
R408/6-123-F/17	PROPELLER BLADE	697071003	INTERNAL FAILURE	20171011021
R408/6-123-F/17	PROPELLER BLADE ASSEMBLY	697071003	TORN	20171006007
HAMILTON SUNDSTRAND				
PROPELLER	PROPELLER	8022551	FAILED	20171207013
PROPELLER	PROPELLER	8022551	FAILED	20171207015
HARTZELL				
HC-B5MP-3A	OVERSPEED GOVERNOR	B210631	AS REMOVED	20171219008
HC-C4YR-2	EQUIPMENT		NOT REPORTED	20171005001
MCCAULEY				
4HFR34C754	ACTUATING PIN ASSEMBLY	B53871	SERVICEABLE	20171025026
EQUIPMENT				
ACK TECHNOLOGIES				
E04	EMERGENCY BEACON		NOT REPORTED	20171204006
AMERI-KING				
AK450	EMERGENCY LOCATOR TRANSMITTER	AK450	FAULTY	20171122012
ARTEX				
4536603	BATTERY PACK	4526499	FAULTY	20171206004
CMC				

<b>Make/Model</b>	<b>Part Name</b>	<b>Part Number</b>	<b>Part Condition</b>	<b>SDR No.</b>
100602198000	HIGH GAIN ANTENNA	100602198001	GOOD	20171114006
HONEYWELL				
324489616	B37 FUEL CONTROL	324489616	OVERHAULED	20171024035
KANNAD				
406AFCOMPACT	EMERGENCY LOCATOR TRANSMITTER	406AFCOMPACT	LOW TRANSMISSION	20171208010
S184050101	EMERGENCY LOCATOR TRANSMITTER 406	S184050101	FAULTY	20171207012
RAPCO				
RIVET	RIVET		NEW WITH IRREGUL	20171101009
TEMPEST				
AA48111	OIL FILTER	AA48111	NEW	20171127009